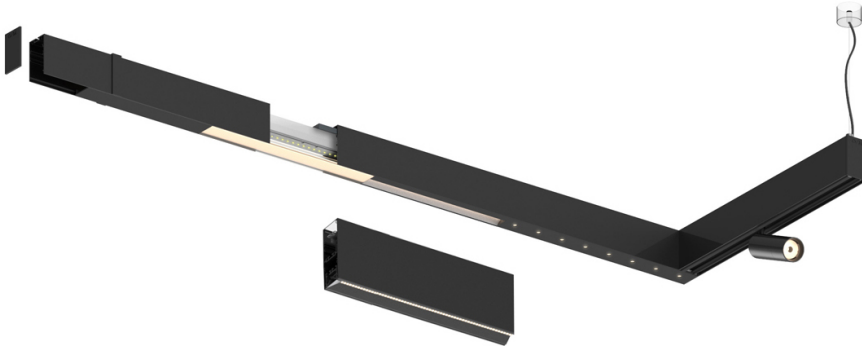


17W / 1800lm / 4000K / DALI / Wide flood
80° / 1459mm

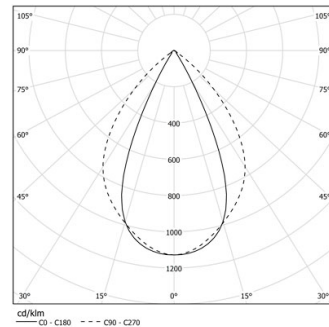
61181

Design: O/M + Bartenbach GmbH

LED CRI>90 / >50.000h, L80/B10 / 2-step MacAdam
Power supply included.
IP20 | 230Vac | 50/60Hz



LED	4000K	Fuente de luz	LLuminaria
Potencia	17W		20W
Flujo	2250lm		1800lm
Eficiencia	136lm/W		92lm/W
LOR	-		0.8
UGR	-		<19



Ángulo de haz
Wide flood 80°

Aplicación

Peso



Acabados

- .01 Blanco/RAL 9010
- .02 Negro/RAL 9005

