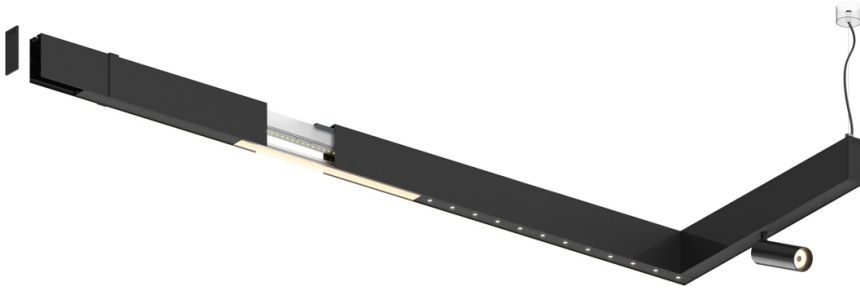


14W / 980lm / 3000K / DALI / Flood 50° /
600mm

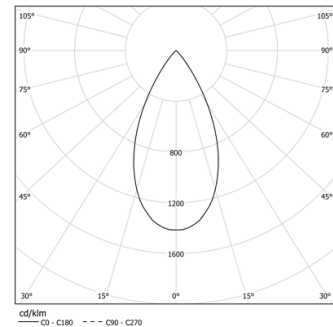
60960

Design: O/M + Bartenbach GmbH

LED CRI>90 / >50.000h, L80/B10
2-step MacAdam / power supply included.
IP20 | 230Vac | 50/60Hz



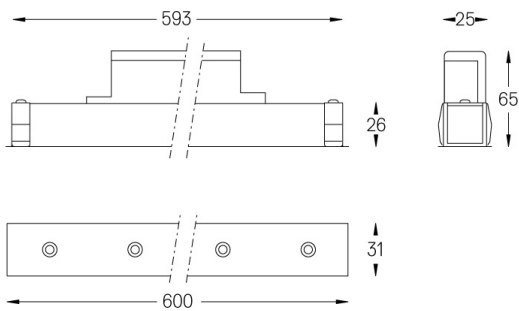
LED	3000K	Fuente de luz	LLuminaria
Potencia	14W		16W
Flujo	1290lm		980lm
Eficiencia	92lm/W		61lm/W
LOR	-		0.7596899224806202
UGR	-		<10



Ángulo de haz
Flood 50°

Aplicación

Peso
0,5Kg



Acabados

- .01 Blanco/RAL 9010
- .02 Negro/RAL 9005