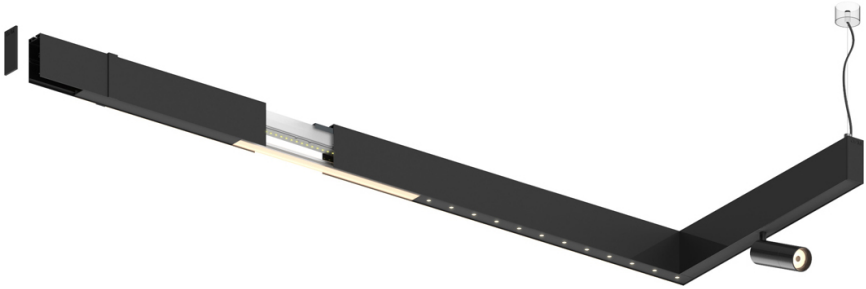
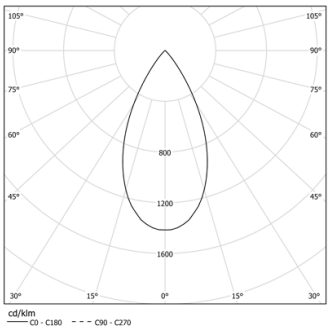


Design: O/M + Bartenbach GmbH

LED CRI>90 / >50.000h, L80/B10
2-step MacAdam / power supply included.
IP20 | 230Vac | 50/60Hz



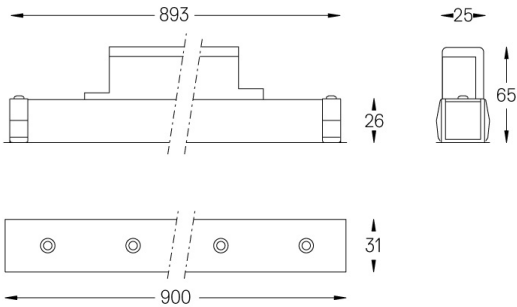
LED	2700K	Fuente de luz	LLuminaria
Potencia	39W		48W
Flujo	3600lm		2730lm
Eficiencia	92lm/W		57lm/W
LOR	-		0.7583333333333333
UGR	-		<16



Ángulo de haz
Flood 50°

Aplicación

Peso
0,6Kg



Acabados

- .01 Blanco/RAL 9010
- .02 Negro/RAL 9005