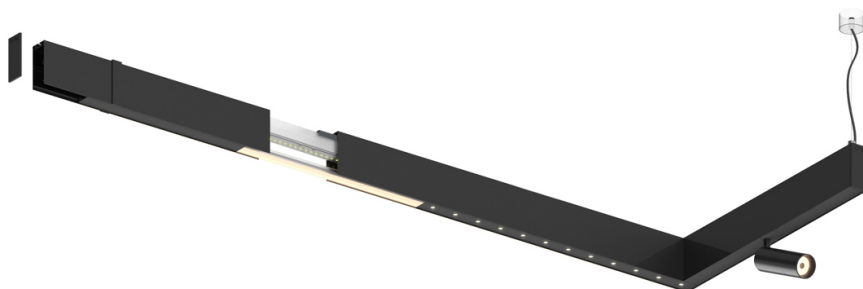

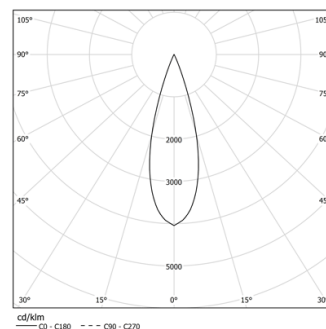


Design: O/M + Bartenbach GmbH

LED CRI>90 / >50.000h, L80/B10
2-step MacAdam / power supply included.
IP20 | 230Vac | 50/60Hz



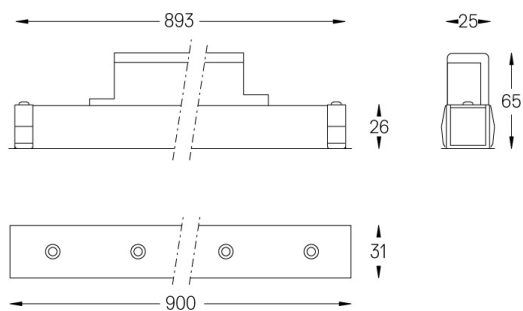
 LED	2700K	Fuente de luz	LLuminaria
Potencia		39W	48W
Flujo		3600lm	2610lm
Eficiencia		92lm/W	54lm/W
LOR		-	0.725
UGR		-	<13



Ángulo de haz
Medium 30°

Aplicación

Peso
0,6Kg



Acabados

- .01 Blanco/RAL 9010
- .02 Negro/RAL 9005