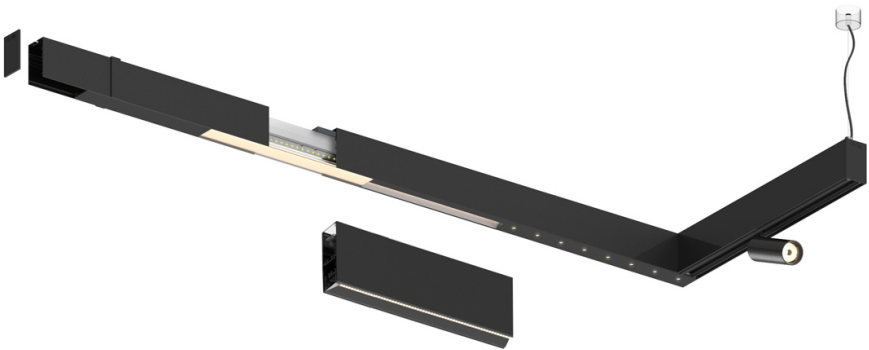

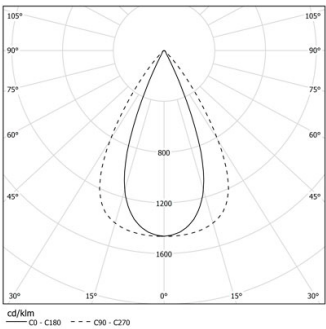


Design: O/M + Bartenbach GmbH

LED CRI>90 / >50.000h, L80/B10 / 2-step MacAdam  
Power supply included.  
IP20 | 230Vac | 50/60Hz



 3000K	Fuente de luz	LLuminaria
Potencia	46W	54W
Flujo	6000lm	4800lm
Eficiencia	130lm/W	89lm/W
LOR	-	0.8
UGR	-	<16



Ángulo de haz  
Flood 65°

Aplicación

Peso



Acabados

○ .01 Blanco/RAL 9010

● .02 Negro/RAL 9005

