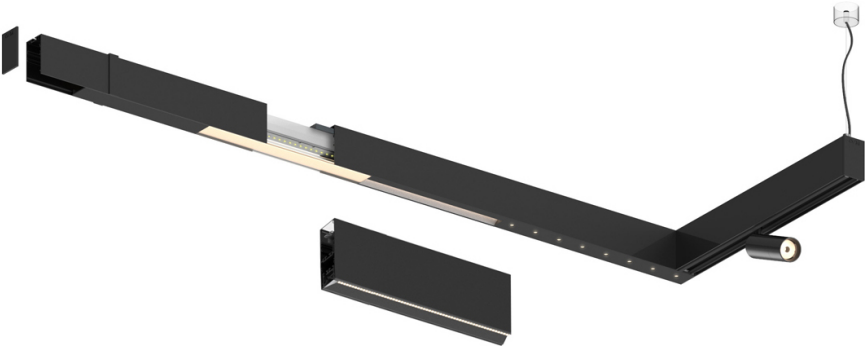



Design: O/M + Bartenbach GmbH

LED CRI>90 / >50.000h, L80/B10 / 2-step MacAdam
Power supply included.
IP20 | 230Vac | 50/60Hz



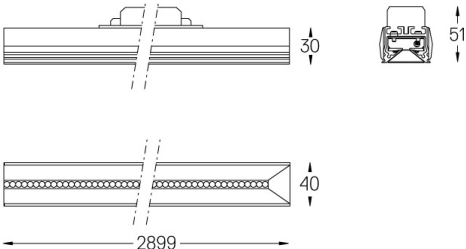
 4000K	Fuente de luz	LLuminaria
Potencia	33W	39W
Flujo	4500lm	3600lm
Eficiencia	136lm/W	92lm/W
LOR	-	0.8
UGR	-	<13



Ángulo de haz
Flood 65°

Aplicación

Peso



Acabados

○ .01 Blanco/RAL 9010

● .02 Negro/RAL 9005