

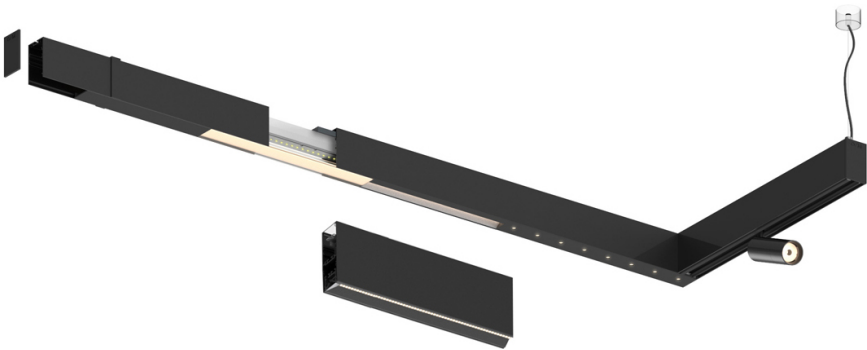



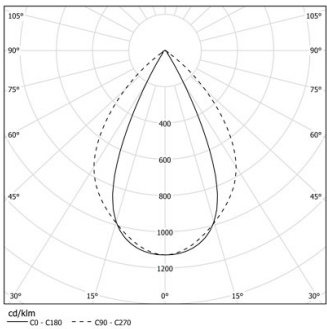
Design: O/M + Bartenbach GmbH

LED CRI>90 / >50.000h, L80/B10 / 2-step MacAdam  
Power supply included.  
IP20 | 230Vac | 50/60Hz



 4000K	Fuente de luz	LLuminaria
Potencia	27W	32W
Flujo	3600lm	2880lm
Eficiencia	136lm/W	92lm/W
LOR	-	0.8
UGR	-	<19



Ángulo de haz  
Wide flood 80°

Aplicación

Peso



Acabados

○ .01 Blanco/RAL 9010

● .02 Negro/RAL 9005

