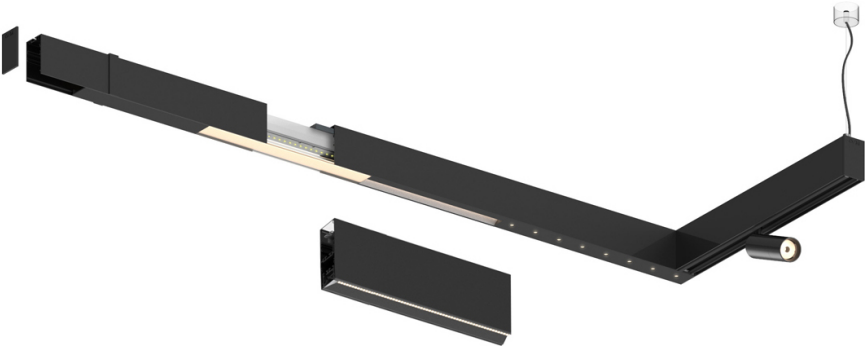


Design: O/M + Bartenbach GmbH

LED CRI>90 / >50.000h, L80/B10 / 2-step MacAdam
Power supply included.
IP20 | 230Vac | 50/60Hz



| | | | |
|------------|---------|---------------|--------------------|
| | 3000K | Fuente de luz | LLuminaria |
| Potencia | 27W | | 32W |
| Flujo | 3360lm | | 2720lm |
| Eficiencia | 127lm/W | | 87lm/W |
| LOR | - | | 0.8100000000000001 |
| UGR | - | | <13 |



Ángulo de haz
Flood 65°

Aplicación

Peso



Acabados

○ .01 Blanco/RAL 9010

● .02 Negro/RAL 9005

