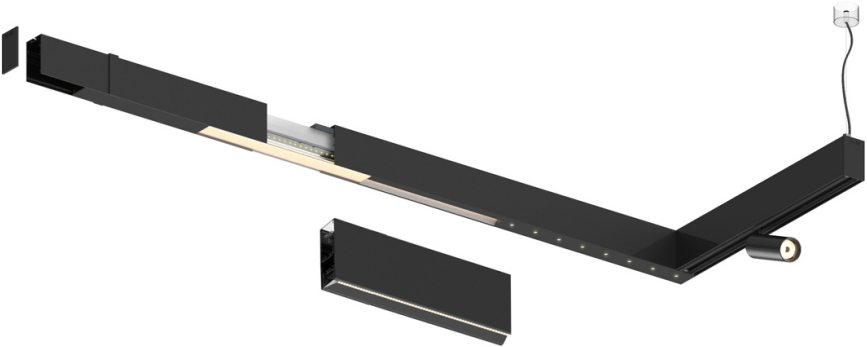
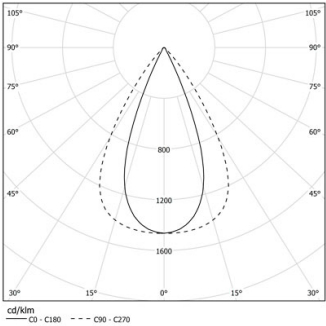


Design: O/M + Bartenbach GmbH

LED CRI>90 / >50.000h, L80/B10 / 2-step MacAdam
Power supply included.
IP20 | 230Vac | 50/60Hz



	3000K	Fuente de luz	LLuminaria
Potencia	27W		32W
Flujo	3360lm		2720lm
Eficiencia	127lm/W		87lm/W
LOR	-		0.8100000000000001
UGR	-		<13



Ángulo de haz
Flood 65°

Aplicación

Peso



Acabados

○ .01 Blanco/RAL 9010

● .02 Negro/RAL 9005

