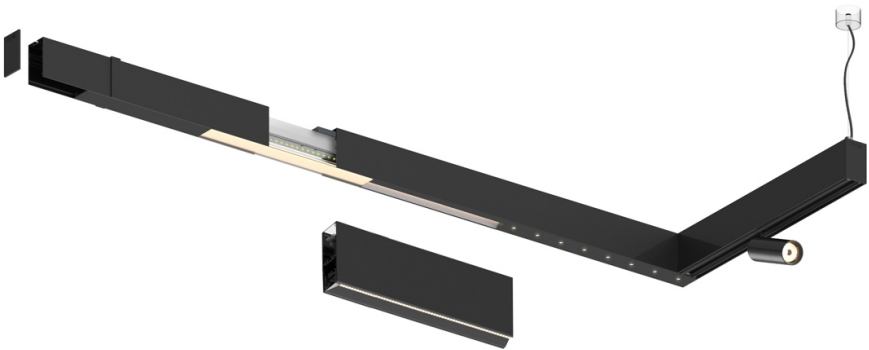
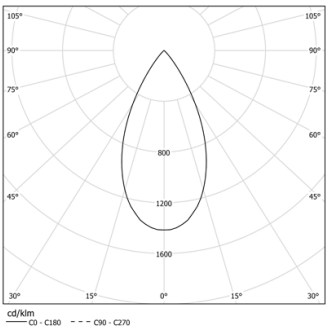


Design: O/M + Bartenbach GmbH

LED CRI>90 / >50.000h, L80/B10 / 2-step MacAdam  
Power supply included.  
IP20 | 230Vac | 50/60Hz



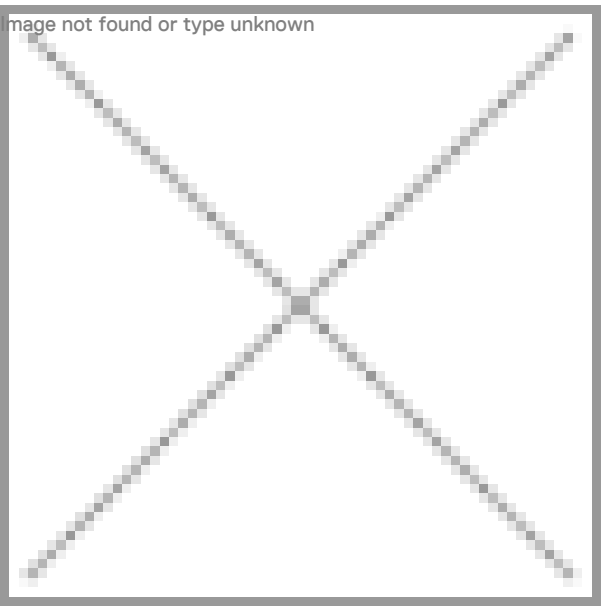
LED	2700K	Fuente de luz	LLuminaria
Potencia	52W		64W
Flujo	4800lm		3640lm
Eficiencia	92lm/W		57lm/W
LOR	-		76%
UGR	-		<16



Ángulo de haz  
Flood 50°

Aplicación

Peso



Acabados

○ .01 Blanco/RAL 9010

● .02 Negro/RAL 9005