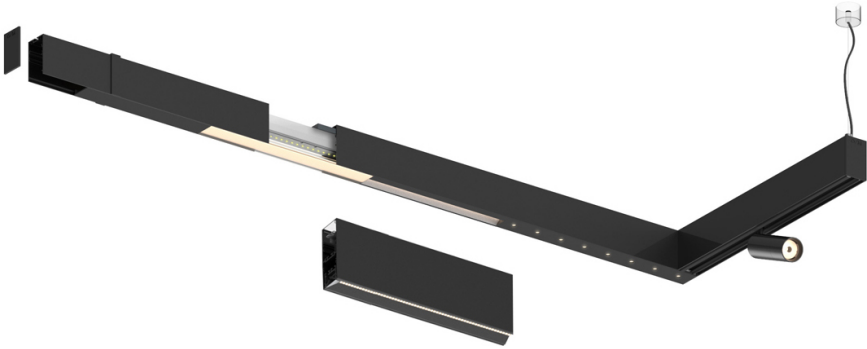
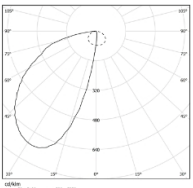


Design: O/M + Bartenbach GmbH

LED CRI>80 / >50.000h, L80/B10  
2-step MacAdam / power supply included.  
DALI DT8  
IP20 | 230Vac | 50/60Hz



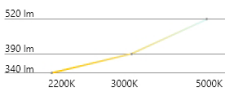
LED	2200K-5000K	Fuente de luz	LLuminaria
Potencia		16W*	19W*
Flujo		1550lm*	710lm*
Eficiencia		97lm/W	37lm/W
LOR		-	46%
UGR		-	-



Ángulo de haz  
Asymmetric

Aplicación

Peso



### Acabados

- .01 Blanco/RAL 9010
- .02 Negro/RAL 9005
- .03 Gris/RAL 9006

