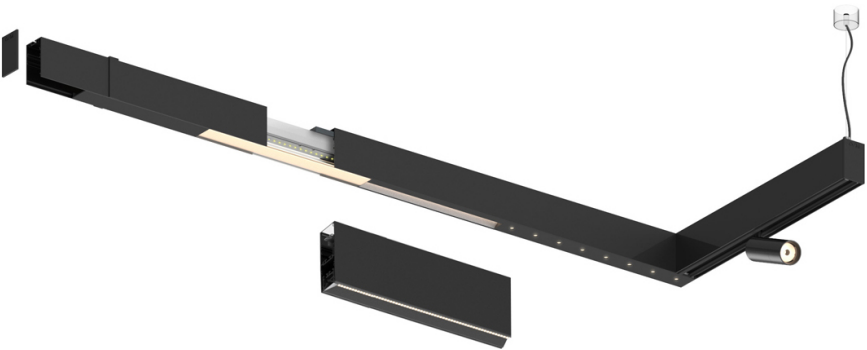

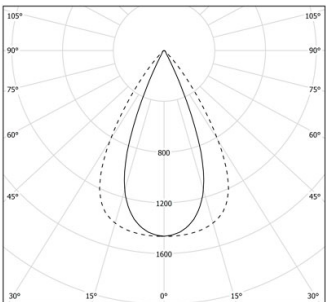


Design: O/M + Bartenbach GmbH

LED CRI>90 / >50.000h, L80/B10 / 2-step MacAdam
Power supply included.
IP20 | 230Vac | 50/60Hz



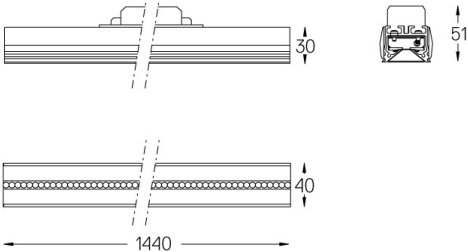
 4000K	Fuente de luz	LLuminaria
Potencia	23W	27W
Flujo	3250lm	2600lm
Eficiencia	141lm/W	96lm/W
LOR	-	0.8
UGR	-	<16



Ángulo de haz
Flood 65°

Aplicación

Peso



- Acabados
- .01 Blanco/RAL 9010
 - .02 Negro/RAL 9005