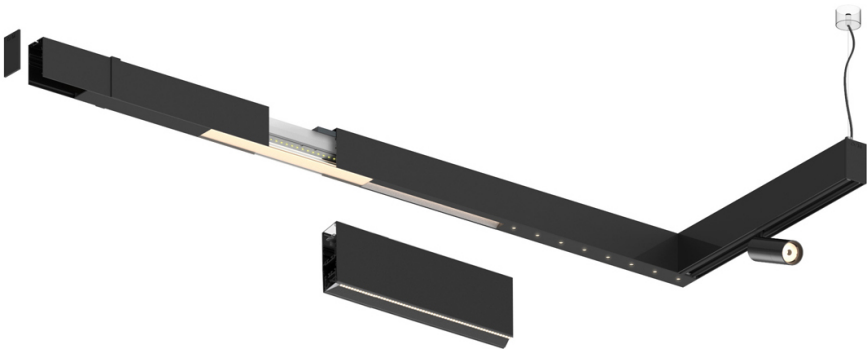
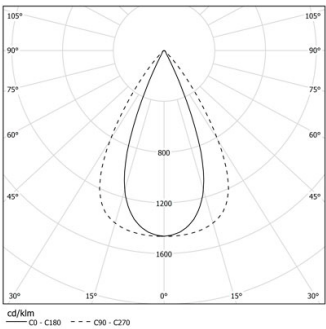


Design: O/M + Bartenbach GmbH

LED CRI>80 / >50.000h, L80/B10 / 2-step MacAdam
Power supply included.
IP20 | 230Vac | 50/60Hz



	2200K-5000K	Fuente de luz	LLuminaria
Potencia	28W*		33W*
Flujo	3650lm*		2900lm*
Eficiencia	120lm/W		85lm/W
LOR	-		0.8273381294964028
UGR	-		<13



Ángulo de haz
Flood 65°

Aplicación

Peso



Acabados

○ .01 Blanco/RAL 9010

● .02 Negro/RAL 9005

