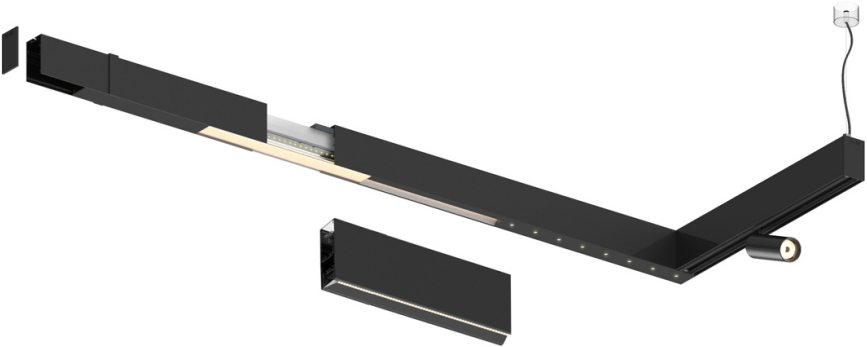


Design: O/M + Bartenbach GmbH

LED CRI>80 / >50.000h, L80/B10 / 2-step MacAdam  
Power supply included.  
IP20 | 230Vac | 50/60Hz



|            |             |               |                    |
|------------|-------------|---------------|--------------------|
|            | 2200K-5000K | Fuente de luz | LLuminaria         |
| Potencia   | 23W*        |               | 27W*               |
| Flujo      | 2920lm*     |               | 2320lm*            |
| Eficiencia | 120lm/W     |               | 85lm/W             |
| LOR        | -           |               | 0.8273381294964028 |
| UGR        | -           |               | <19                |



Ángulo de haz  
Wide flood 80°

Aplicación

Peso



Acabados

○ .01 Blanco/RAL 9010

● .02 Negro/RAL 9005

