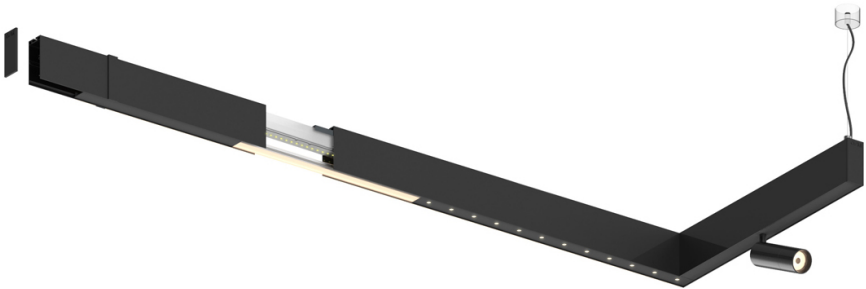
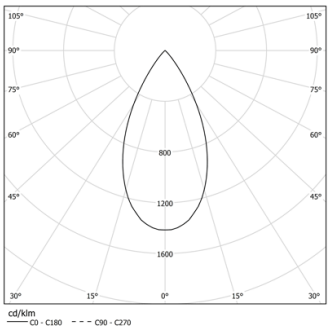


Design: O/M + Bartenbach GmbH

LED CRI>90 / >50.000h, L80/B10  
2-step MacAdam / power supply included.  
IP20 | 230Vac | 50/60Hz



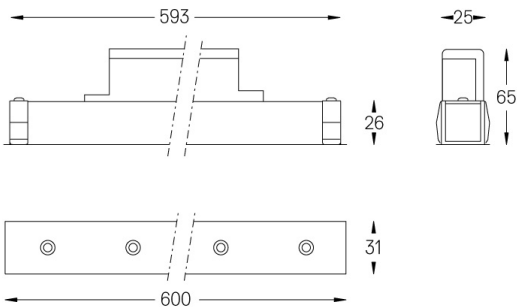
LED	3000K	Fuente de luz	LLuminaria
Potencia	26W		32W
Flujo	2580lm		1960lm
Eficiencia	99lm/W		61lm/W
LOR	-		0.7596899224806202
UGR	-		<16



Ángulo de haz  
Flood 50°

Aplicación

Peso  
0,5Kg



Acabados

○ .01 Blanco/RAL 9010

● .02 Negro/RAL 9005