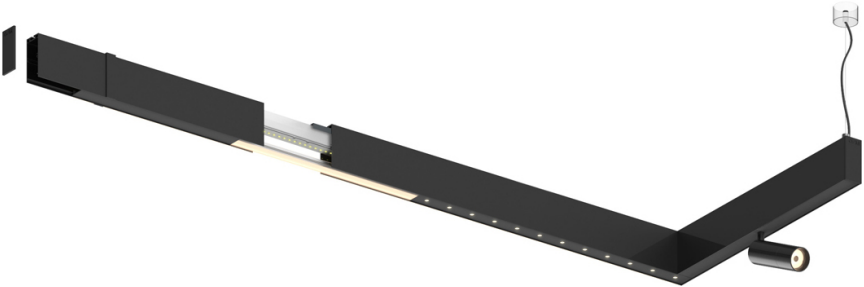


Design: O/M + Bartenbach GmbH

LED CRI>90 / >50.000h, L80/B10
2-step MacAdam / power supply included.
IP20 | 230Vac | 50/60Hz



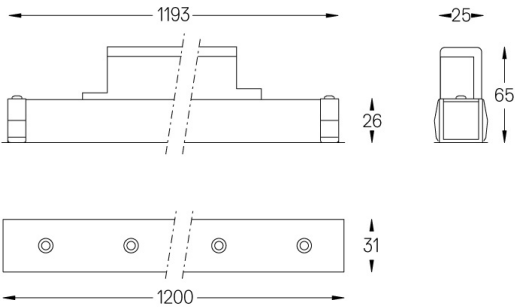
| LED | 2700K | Fuente de luz | LLuminaria |
|------------|--------|---------------|------------|
| Potencia | 52W | | 64W |
| Flujo | 4800lm | | 3480lm |
| Eficiencia | 92lm/W | | 54lm/W |
| LOR | - | | 0.725 |
| UGR | - | | <13 |



Ángulo de haz
Medium 30°

Aplicación

Peso
0,8Kg



Acabados

- .01 Blanco/RAL 9010
- .02 Negro/RAL 9005