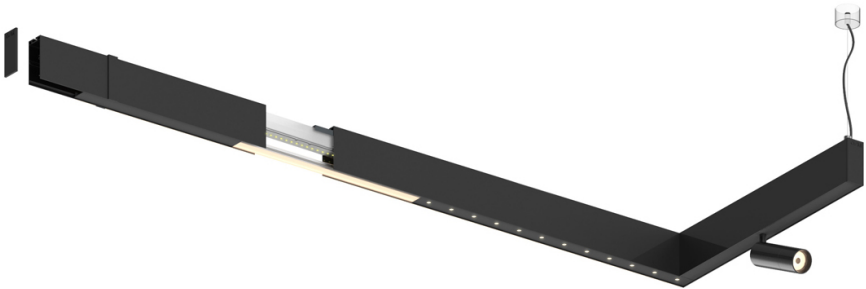


Design: O/M + Bartenbach GmbH

LED CRI>90 / >50.000h, L80/B10  
2-step MacAdam / power supply included.  
IP20 | 230Vac | 50/60Hz



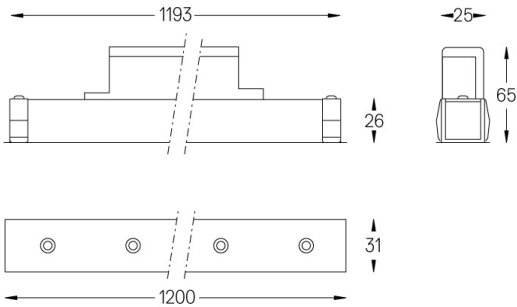
| LED        | 2700K  | Fuente de luz | LLuminaria |
|------------|--------|---------------|------------|
| Potencia   | 52W    |               | 64W        |
| Flujo      | 4800lm |               | 3480lm     |
| Eficiencia | 92lm/W |               | 54lm/W     |
| LOR        | -      |               | 0.725      |
| UGR        | -      |               | <13        |



Ángulo de haz  
Medium 30°

Aplicación

Peso  
0,8Kg



### Acabados

- .01 Blanco/RAL 9010
- .02 Negro/RAL 9005