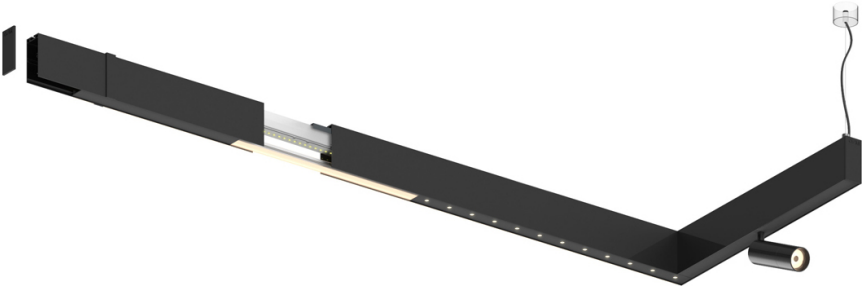
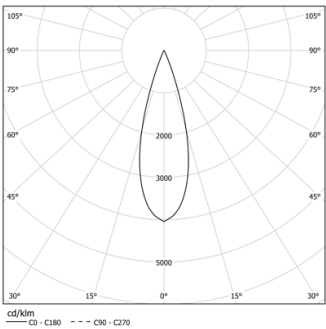


Design: O/M + Bartenbach GmbH

LED CRI>90 / >50.000h, L80/B10
2-step MacAdam / power supply included.
IP20 | 230Vac | 50/60Hz



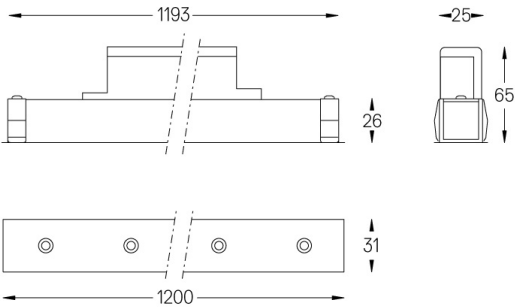
LED	2700K	Fuente de luz	LLuminaria
Potencia	27W		32W
Flujo	2400lm		1760lm
Eficiencia	89lm/W		55lm/W
LOR	-		0.7333333333333333
UGR	-		<10



Ángulo de haz
Medium 30°

Aplicación

Peso
0,8Kg



Acabados

- .01 Blanco/RAL 9010
- .02 Negro/RAL 9005