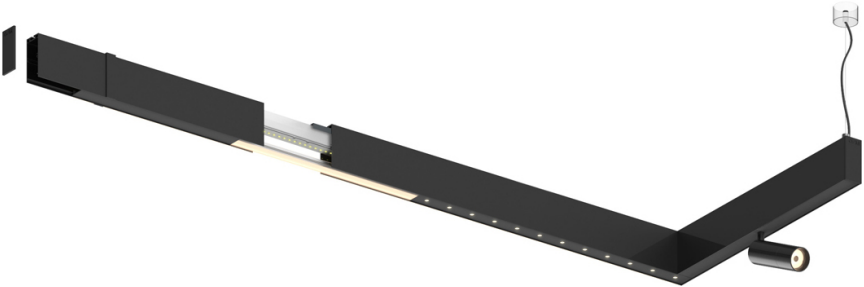


Design: O/M + Bartenbach GmbH

LED CRI>90 / >50.000h, L80/B10  
2-step MacAdam / power supply included.  
IP20 | 230Vac | 50/60Hz



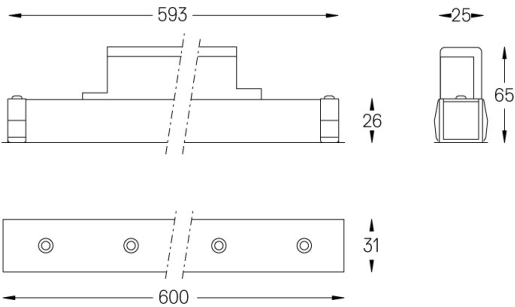
LED	2700K	Fuente de luz	LLuminaria
Potencia	14W		16W
Flujo	1200lm		920lm
Eficiencia	86lm/W		58lm/W
LOR	-		0.7666666666666667
UGR	-		<10



Ángulo de haz  
Flood 50°

Aplicación

Peso  
0,5Kg



Acabados

- .01 Blanco/RAL 9010
- .02 Negro/RAL 9005