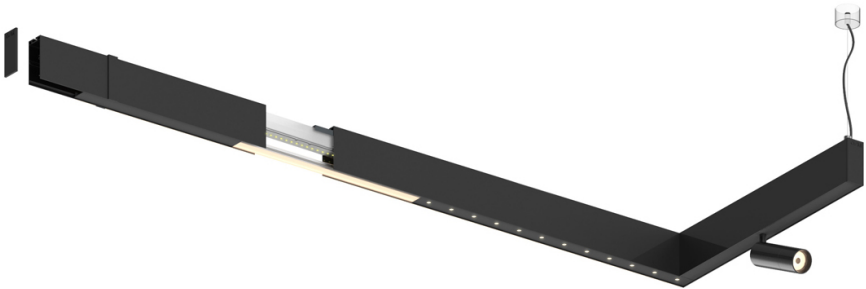


Design: O/M + Bartenbach GmbH

LED CRI>90 / >50.000h, L80/B10
2-step MacAdam / power supply included.
IP20 | 230Vac | 50/60Hz



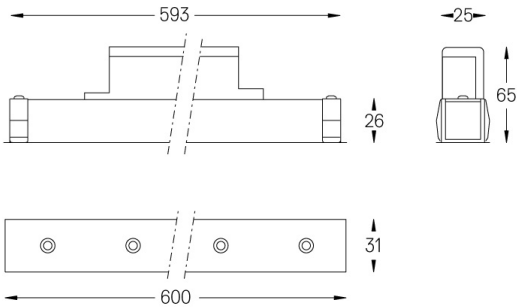
LED	2700K	Fuente de luz	LLuminaria
Potencia	26W		32W
Flujo	2400lm		1740lm
Eficiencia	92lm/W		54lm/W
LOR	-		0.725
UGR	-		<13



Ángulo de haz
Medium 30°

Aplicación

Peso
0,5Kg



Acabados

○ .01 Blanco/RAL 9010

● .02 Negro/RAL 9005