

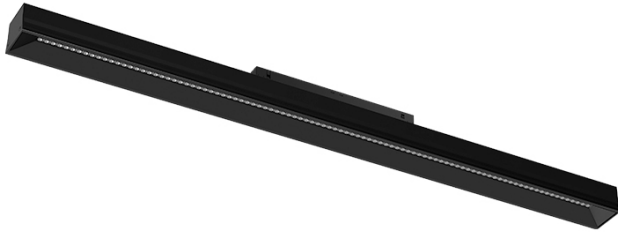
6,6W / 720lm / 4000K / DALI / Wide flood
80° / 617mm

75054

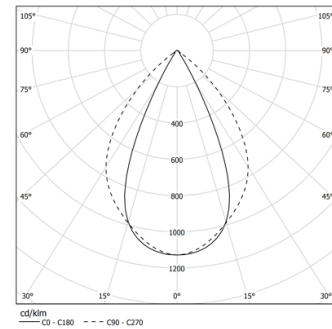
Module with linear extruded lenses (Lightstream) combined with a secondary reflector, integrated into an extruded aluminium profile.

Available in white (.04) and black (.05)

LED CRI>90 / >50.000h, L80/B10 / 2-step MacAdam
Power supply included.
IP20 | 48Vdc

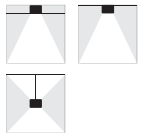


LED	4000K	Light Source	Luminaire
Power		6,6W	8,3W
Flux		900lm	720lm
Efficiency		136lm/W	87lm/W
LOR		-	80%
UGR		-	<19



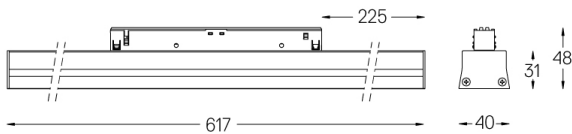
Beam angle
Wide flood 80°

Application



Weight

-



Finishes

- .04 Matt White
- .05 Matt Black

Optional

70045 Modules removal tool
20x75mm

Data according to regulations

2019/2020/EU supplemented by 2021/341 | 2019/2015/EU supplemented by 2021/340/EU Energy Consumption Labelling Ordinance. This product contains a light source of efficiency class D Model Identifier 4053560084L