

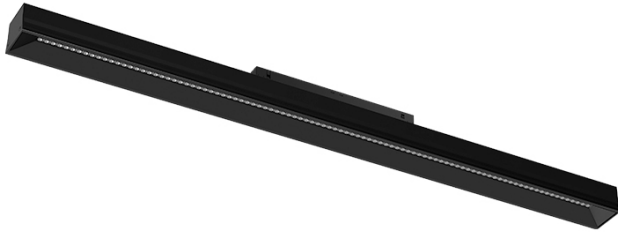
10W / 1110lm / 4000K / DALI / Flood 65° /
617mm

75053

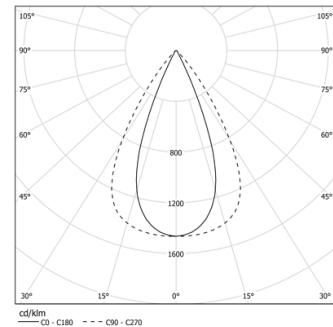
Module with linear extruded lenses (Lightstream) combined with a secondary reflector, integrated into an extruded aluminium profile.

Available in white (.04) and black (.05)

LED CRI>90 / >50.000h, L80/B10 / 2-step MacAdam
Power supply included.
IP20 | 48Vdc

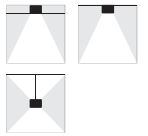


LED	4000K	Light Source	Luminaire
Power		10W	13W
Flux		1390lm	1110lm
Efficiency		139lm/W	89lm/W
LOR		-	80%
UGR		-	<16



Beam angle
Flood 65°

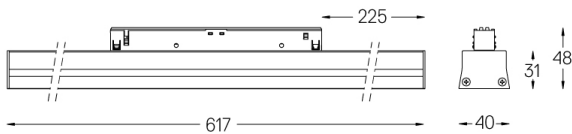
Application



Weight

-

mm



Finishes

- .04 Matt White
- .05 Matt Black

Optional

70045 Modules removal tool
20x75mm

Data according to regulations

2019/2020/EU supplemented by 2021/341 | 2019/2015/EU supplemented by 2021/340/EU Energy Consumption Labelling Ordinance. This product contains a light source of efficiency class D
Model Identifier 4053560084M