

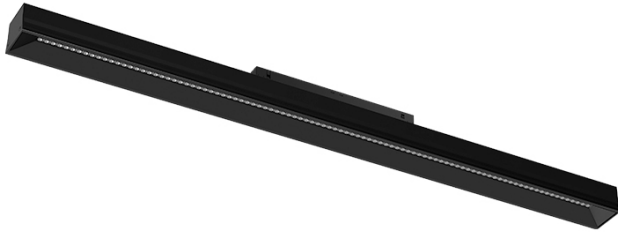
3,3W / 340lm / 3000K / DALI / Flood 65° /
329mm

75016

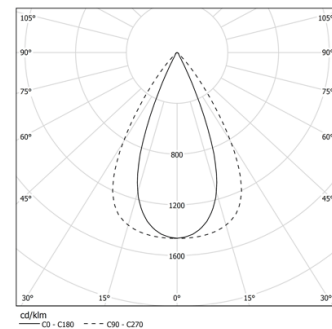
Module with linear extruded lenses (Lightstream) combined with a secondary reflector, integrated into an extruded aluminium profile.

Available in white (.04) and black (.05)

LED CRI>90 / >50.000h, L80/B10 / 2-step MacAdam
Power supply included.
IP20 | 48Vdc

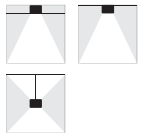


LED	3000K	Light Source	Luminaire
Power		3,3W	4,2W
Flux		420lm	340lm
Efficiency		127lm/W	81lm/W
LOR		-	81%
UGR		-	<13



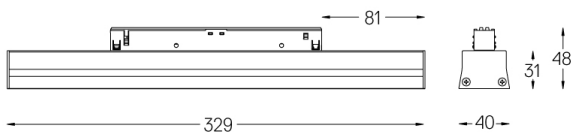
Beam angle
Flood 65°

Application



Weight

-



Finishes

- .04 Matt White
- .05 Matt Black

Optional

70045 Modules removal tool
20x75mm

Data according to regulations

2019/2020/EU supplemented by 2021/341 | 2019/2015/EU supplemented by 2021/340/EU Energy Consumption Labelling Ordinance. This product contains a light source of efficiency class E Model Identifier 2053560160L