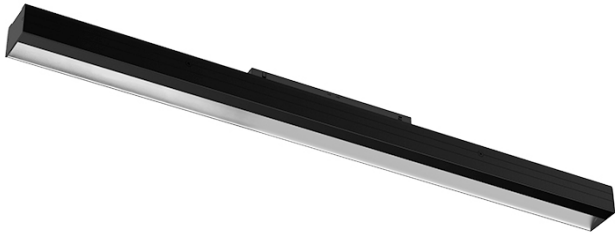


16W / 1000lm / 4000K / DALI / Wallwasher /  
603mm

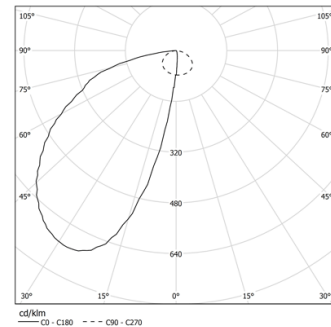
74021

Design: O/M + Bartenbach GmbH  
Module with LED light source and asymmetrical  
aluminium reflector.  
Available in white (.01) and black (.02)

LED CRI>80 / >50.000h, L80/B10  
2-step MacAdam / power supply included.  
IP20 | 48Vdc

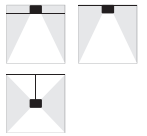


LED	4000K	Light Source	Luminaire
Power	16W	19,5W	
Flux	2240lm	1000lm	
Efficiency	140lm/W	51lm/W	
LOR	-	45%	
UGR	-	-	



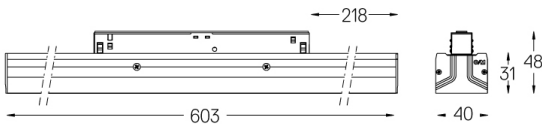
Beam angle  
Wallwasher

Application



Weight

-



Finishes

- .01 White / RAL 9010
- .02 Black / RAL 9005

Optional

**70045** Modules removal tool  
20x75mm

Data according to regulations

2019/2020/EU supplemented by 2021/341 | 2019/2015/EU  
supplemented by 2021/340/EU Energy Consumption Labelling  
Ordinance. This product contains a light source of efficiency class D  
Model Identifier 2053460026