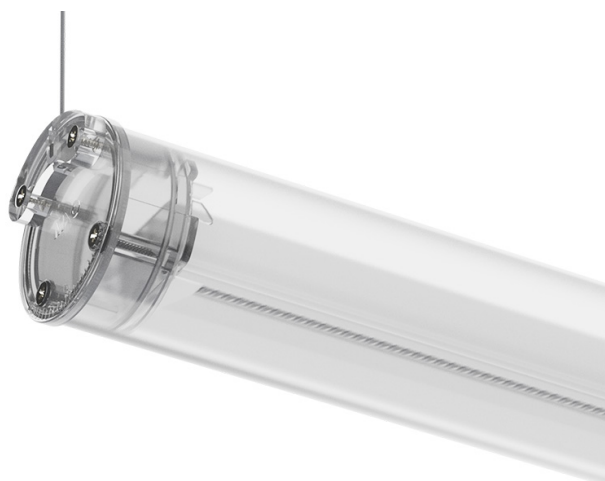


## Tubo Pro Pendant

53W / 5100lm / 4000K / DALI / Wide flood  
76° / 2984mm

64939



Design: Eduardo Souto de Moura

Pendant luminaire with tubular semi frosted PMMA body with 70mm diameter.

Clear polycarbonate end caps with marked installation angles.

Linear lenses (Lightstream) combined with a secondary reflector, integrated into an extruded aluminium profile.

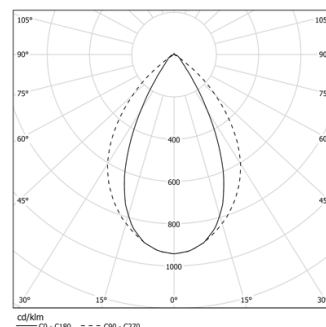
Equipped with 2m cable (5x0.75 mm²).

Fitting accessories ordered separately.

LED CRI>90 / >50.000h, L80/B10 / 2-step MacAdam  
Power supply included.  
IP44 | 230Vac | 50/60Hz



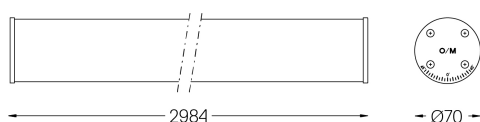
| LED        | 4000K | Light Source | Luminaire |
|------------|-------|--------------|-----------|
| Power      |       | 53W          | 62,4W     |
| Flux       |       | 7500lm       | 5100lm    |
| Efficiency |       | 142lm/W      | 82lm/W    |
| LOR        |       | -            | 68%       |
| UGR        |       | -            | <16       |



Beam angle  
Wide flood 76°

Application

Weight



### Finishes

○ .01 White / RAL 9010

### Mandatory

59147 Pendant fitting accessory (>2000mm)

### Data according to regulations

2019/2020/EU supplemented by 2021/341 | 2019/2015/EU supplemented by 2021/340/EU Energy Consumption Labelling Ordinance. This product contains light sources of efficiency class D  
Model Identifier 4053560084