

5,6W / 410lm / 3000K / On/Off / Flood 59° /
ø45mm

64462

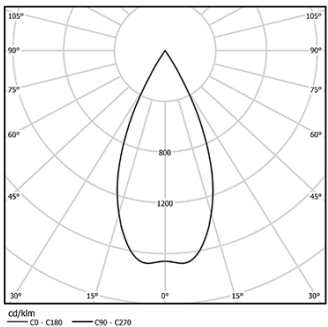


Design: O/M + Bartenbach GmbH
Recessed spotlight with die-cast aluminium body
with electrostatic 100% polyester paint finish.
Spot-lens with individual complex surface rips to
provide a focal light and an extremely narrow beam.
Orientable by 150° horizontal rotation and 330°
vertical rotation.
Driver included.

LED CRI>90 / >50.000h, L80/B10
2-step MacAdam / Driver included.
IP20 | 230Vac | 50/60Hz



LED	3000K	Light Source	Luminaire
Power		5,6W	7W
Flux		460lm	410lm
Efficiency		82lm/W	59lm/W
LOR		-	89%
Operating Condition		-	230Vac

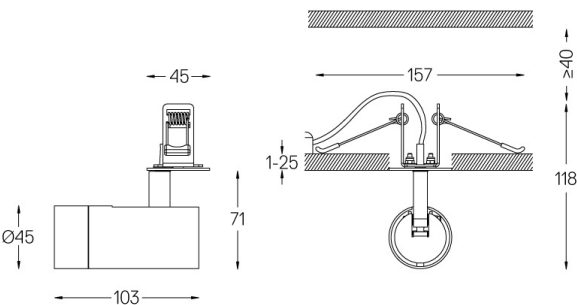


Beam angle
Flood 59°

Application



Weight
0,27Kg



Finishes

- .01 White / RAL 9010
- .02 Black / RAL 9005

Optional

- 59072 1/4 CTO
ø35x1,1mm
- 59073 1/2 CTO
ø35x1,1mm
- 59074 Louvre
ø35x2mm
- 59075 Soft diffuser
ø35x2mm

The cutout dimensions are for plasterboard ceilings. For other type of
material please contact: support@om-light.com

Data according to regulations

2019/2020/EU supplemented by 2021/341 |2019/2015/EU
supplemented by 2021/340/EU Energy Consumption Labelling
Ordinance. This product contains a light source of efficiency class G
Model Identifier 4053560290L