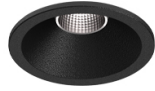


3,1W / 240lm / 4000K / On/Off / Flood 56° /
 ø45mm

63481



Design: O/M + Bartenbach GmbH

Ceiling-recessed luminaire with aluminium die-cast body and heat sink with electrostatic 100% polyester paint finish.

Lightcore optics for defined and perfectly controlled beam of light.

Easy recessing system with spring clips.

Fitting accessories for different applications are available.

LED CRI>80 / >50.000h, L80/B10
 2-step MacAdam / Power supply included.
 IP20 | 230Vac | 50/60Hz



LED	4000K	Light Source	Luminaire
Power		3,1W	4W
Flux		280lm	240lm
Efficiency		90lm/W	60lm/W
LOR		-	86%
UGR		-	<16



Beam angle
 Flood 56°

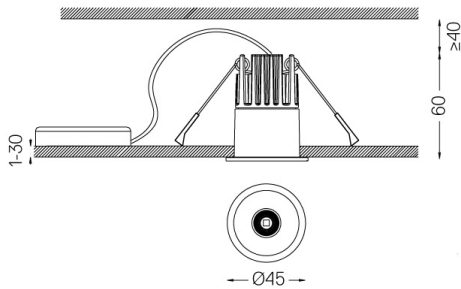
Application



Weight
 0,20Kg



Ø37



Finishes

- .01 White / RAL 9010
- .02 Black / RAL 9005

The cutout dimensions are for plasterboard ceilings. For other type of material please contact: support@om-light.com

Data according to regulations

2019/2020/EU supplemented by 2021/341 | 2019/2015/EU supplemented by 2021/340/EU Energy Consumption Labelling Ordinance. This product contains a light source of efficiency class G Model Identifier 4053560313L