

27W / 2880lm / 4000K / DALI / Flood 65° /
2323mm

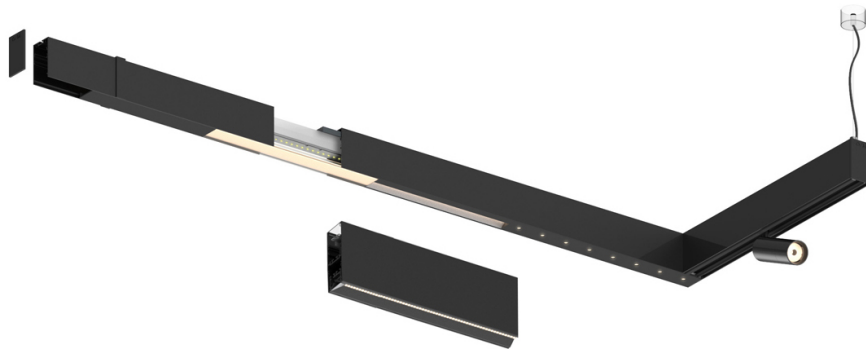
63156

Compatibility with other modules must be confirmed
with support@om-light.com

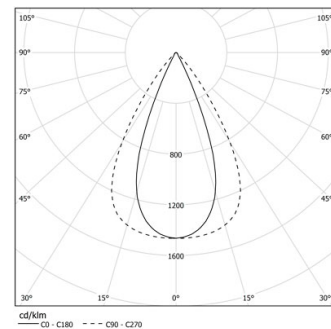
Design: OM + Bartenbach
GmbH

Module with linear extruded lenses (Lightstream)
combined with a secondary reflector, integrated into
an extruded aluminium profile.

LED CRI>90 / >50.000h, L80/B10 / 2-step MacAdam
Power supply included.
IP20 | 230Vac | 50/60Hz



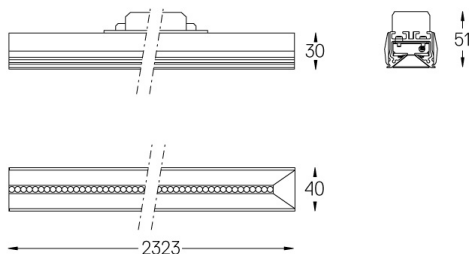
| LED | 4000K | Light Source | Luminaire |
|------------|-------|--------------|-----------|
| Power | | 27W | 32W |
| Flux | | 3600lm | 2880lm |
| Efficiency | | 136lm/W | 92lm/W |
| LOR | | - | 0.8 |
| UGR | | - | <13 |



Beam angle
Flood 65°

Application

Weight



Finishes

- .01 White / RAL 9010
- .02 Black / RAL 9005

For the specific supply of "DALI 2" drivers, please contact:
support@om-light.com

Choose the length and layout of the system exactly as you want it, to
model the right lighting functions for different tasks. For further
information please contact: support@om-light.com