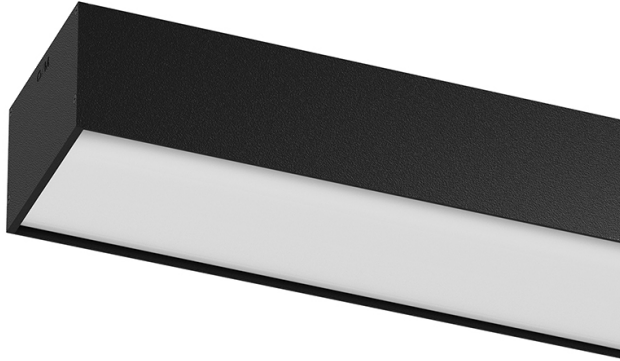


## U120 IP54 Surface

140W / 12400lm / 4000K / On/Off / Diffuse /  
2319mm

62109

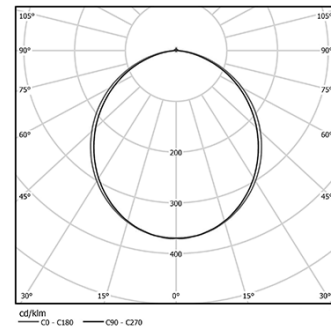


Design: Eduardo Souto de Moura  
Surface luminaire with housing made of aluminium profile with 25micron maximum corrosion resistance anodization with matt finish or with textured electrostatic 100% polyester paint.  
Frosted polycarbonate diffuser with user friendly clipping system and double fitting system: flushed or recessed.  
Aluminium anodised end caps with matt finish or electrostatic 100% polyester paint with textured-finish.

LED CRI>80 / >50.000h, L80/B10 / 3-step MacAdam  
Power supply included.  
IP54 | 230Vac | 50/60Hz



LED	4000K	Light Source	Luminaire
Power	140W		161W
Flux	20000lm		12400lm
Efficiency	143lm/W		77lm/W
LOR	-		62%
UGR	-		<25

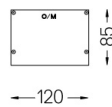
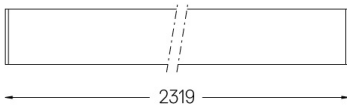


Beam angle  
Diffuse

Application



Weight  
10,4Kg



### Finishes

- .01 White / RAL 9010
- .02 Black / RAL 9005
- .10 Anodised aluminium

### Data according to regulations

2019/2020/EU supplemented by 2021/341 | 2019/2015/EU supplemented by 2021/340/EU Energy Consumption Labelling Ordinance. This product contains light sources of efficiency class C  
Model Identifier WU-M-536-S-BC-840