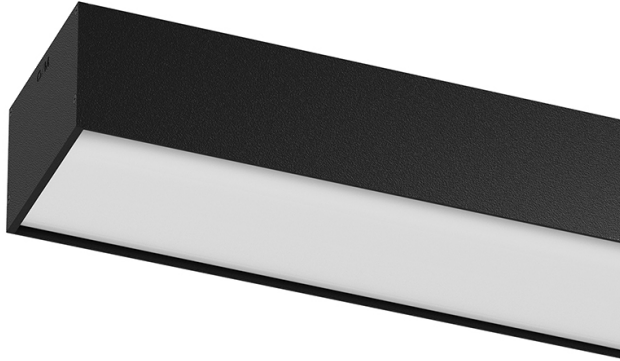


U120 IP54 Surface

76W / 5600lm / 3000K / On/Off / Diffuse /
2319mm

62092

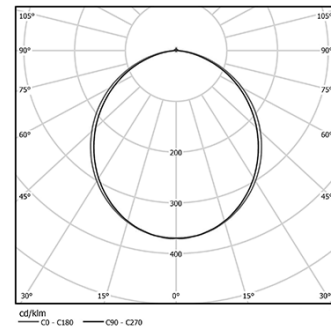


Design: Eduardo Souto de Moura
Surface luminaire with housing made of aluminium profile with 25micron maximum corrosion resistance anodization with matt finish or with textured electrostatic 100% polyester paint.
Frosted polycarbonate diffuser with user friendly clipping system and double fitting system: flushed or recessed.
Aluminium anodised end caps with matt finish or electrostatic 100% polyester paint with textured-finish.

LED CRI>80 / >50.000h, L80/B10 / 3-step MacAdam
Power supply included.
IP54 | 230Vac | 50/60Hz



LED	3000K	Light Source	Luminaire
Power		76W	89,4W
Flux		9040lm	5600lm
Efficiency		119lm/W	63lm/W
LOR		-	62%
UGR		-	<25

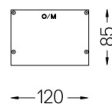
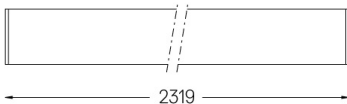


Beam angle
Diffuse

Application



Weight
10,4Kg



Finishes

- .01 White / RAL 9010
- .02 Black / RAL 9005
- .10 Anodised aluminium

Data according to regulations

2019/2020/EU supplemented by 2021/341 | 2019/2015/EU supplemented by 2021/340/EU Energy Consumption Labelling Ordinance. This product contains light sources of efficiency class D
Model Identifier WU-M-536-S-BC-830