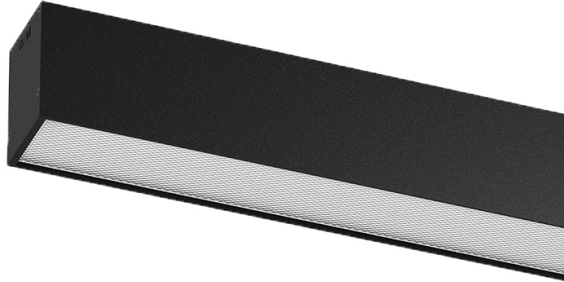


U60 Surface/Pendant

34W / 4000lm / 4000K / On/Off / Prismatic /
2831mm

61886



Design: Eduardo Souto de Moura
Surface or pendant luminaire with housing made of aluminium profile with 25micron maximum corrosion resistance anodization with matt finish or with textured electrostatic 100% polyester paint. Prismatic polycarbonate diffuser with low luminance and glare control (UGR<19 for low output or UGR<22 for High Output). Aluminium anodised end caps with matt finish or electrostatic 100% polyester paint with textured-finish.
Fitting accessories ordered separately.

LED CRI>80 / >50.000h, L80/B10 / 3-step MacAdam
Power supply included.
IP40 | 230Vac | 50/60Hz



| LED | 4000K | Light Source | Luminaire |
|------------|-------|--------------|-----------|
| Power | | 34W | 40W |
| Flux | | 6500lm | 4000lm |
| Efficiency | | 191lm/W | 100lm/W |
| LOR | | - | 62% |
| UGR | | - | <19 |



Beam angle
Prismatic

Application

Weight
6,2Kg



Finishes

- .01 White / RAL 9010
- .02 Black / RAL 9005
- .10 Anodised aluminium

Mandatory

- 54036 Pendant direct fitting accessory
- 54034 Clear Base
- ø60x35mm

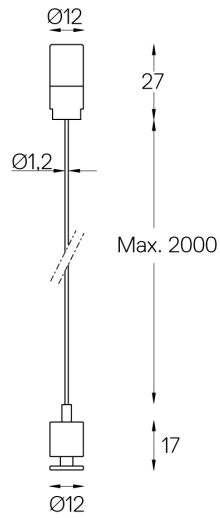
Data according to regulations

2019/2020/EU supplemented by 2021/341 |2019/2015/EU supplemented by 2021/340/EU Energy Consumption Labelling Ordinance. This product contains light sources of efficiency class C Model Identifier 89603212, 89603217

U60 Surface/Pendant

Pendant direct fitting
accessory

54036

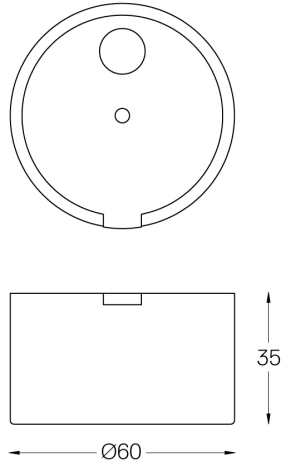


One 2m steel cable (1,2mm)
Max interval 3m

U60 Surface/Pendant

Clear Base

54034



On/Off (3x0,75mm²). Includes:
One clear polycarbonate power supply base (IP20).
One clear power cable (2m).
One clear power supply base must be applied every 30m (ø60x35mm)