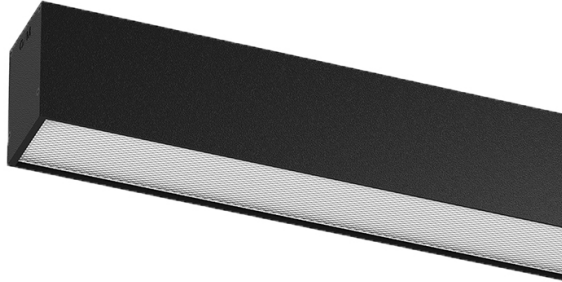


17W / 2000lm / 4000K / On/Off / Prismatic /  
1429mm

61882

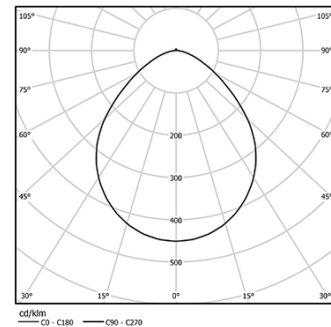


Design: Eduardo Souto de Moura  
Surface or pendant luminaire with housing made of aluminium profile with 25micron maximum corrosion resistance anodization with matt finish or with textured electrostatic 100% polyester paint. Prismatic polycarbonate diffuser with low luminance and glare control (UGR<19 for low output or UGR<22 for High Output). Aluminium anodised end caps with matt finish or electrostatic 100% polyester paint with textured-finish.  
Fitting accessories ordered separately.

LED CRI>80 / >50.000h, L80/B10 / 3-step MacAdam  
Power supply included.  
IP40 | 230Vac | 50/60Hz



LED	4000K	Light Source	Luminaire
Power		17W	20,7W
Flux		3250lm	2000lm
Efficiency		191lm/W	96lm/W
LOR		-	62%
UGR		-	<19



Beam angle  
Prismatic

Application



Weight  
3,1Kg



Finishes

- .01 White / RAL 9010
- .02 Black / RAL 9005
- .10 Anodised aluminium

Mandatory

- 54036 Pendant direct fitting accessory
- 54034 Clear Base
- ø60x35mm

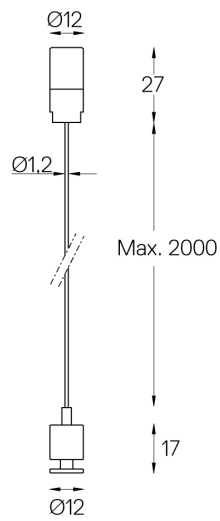
Data according to regulations

2019/2020/EU supplemented by 2021/341 |2019/2015/EU supplemented by 2021/340/EU Energy Consumption Labelling Ordinance. This product contains light sources of efficiency class C  
Model Identifier 89603212, 89603217

## U60 Surface/Pendant

Pendant direct fitting  
accessory

54036



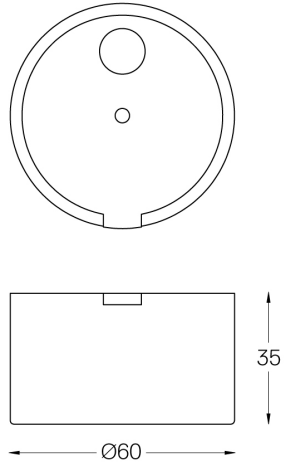
One 2m steel cable (1,2mm)  
Max interval 3m

## U60 Surface/Pendant

---

Clear Base

54034



On/Off (3x0,75mm<sup>2</sup>). Includes:  
One clear polycarbonate power supply base (IP20).  
One clear power cable (2m).  
One clear power supply base must be applied every 30m (ø60x35mm)