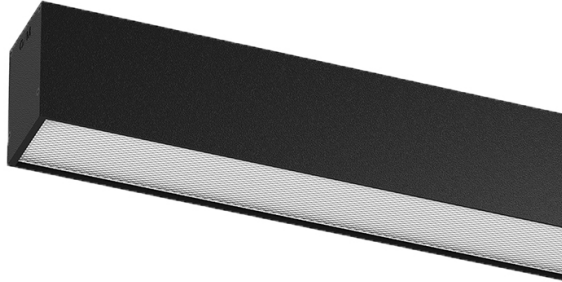


U60 Surface/Pendant

34W / 3700lm / 2700K / DALI / Prismatic /
2831mm

61862

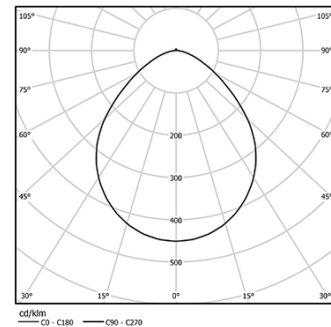


Design: Eduardo Souto de Moura
Surface or pendant luminaire with housing made of aluminium profile with 25micron maximum corrosion resistance anodization with matt finish or with textured electrostatic 100% polyester paint. Prismatic polycarbonate diffuser with low luminance and glare control (UGR<19 for low output or UGR<22 for High Output). Aluminium anodised end caps with matt finish or electrostatic 100% polyester paint with textured-finish.
Fitting accessories ordered separately.

LED CRI>80 / >50.000h, L80/B10 / 3-step MacAdam
Power supply included.
IP40 | 230Vac | 50/60Hz



LED	2700K	Light Source	Luminaire
Power		34W	40W
Flux		6000lm	3700lm
Efficiency		176lm/W	93lm/W
LOR		-	62%
UGR		-	<19



Beam angle
Prismatic

Application



Weight
6,2Kg



Finishes

- .01 White / RAL 9010
- .02 Black / RAL 9005
- .10 Anodised aluminium

Mandatory

54036 Pendant direct fitting accessory
56051 Clear Base DALI
ø60x35mm

For the specific supply of "DALI 2" drivers, please contact:
support@om-light.com

Data according to regulations

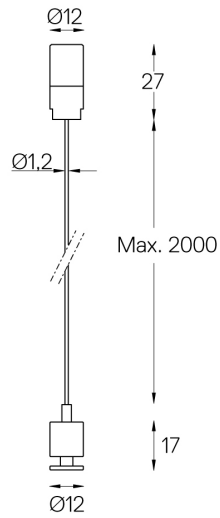
2019/2020/EU supplemented by 2021/341 | 2019/2015/EU supplemented by 2021/340/EU Energy Consumption Labelling Ordinance. This product contains light sources of efficiency class C and D

Model Identifier 89603210, 89603215

U60 Surface/Pendant

Pendant direct fitting
accessory

54036

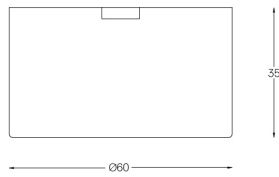
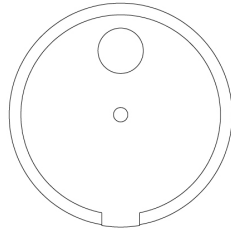


One 2m steel cable (1,2mm)
Max interval 3m

U60 Surface/Pendant

Clear Base DALI

56051



DALI (5x0,75mm²). Includes:
One clear polycarbonate power supply base (IP20).
One clear power cable (2m).
One clear power supply base must be applied every 30m (ø60x35mm)
Steel cable ordered separately