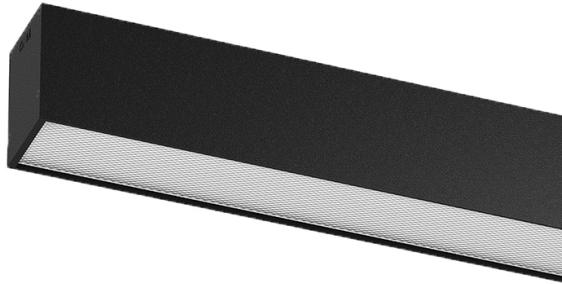


## U60 Surface/Pendant

28W / 2960lm / 2700K / DALI / Prismatic /  
2271mm

61860

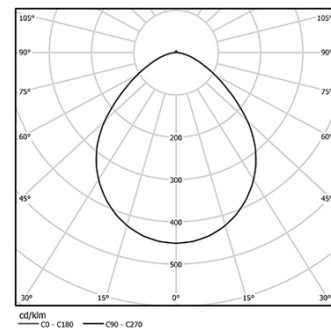


Design: Eduardo Souto de Moura  
Surface or pendant luminaire with housing made of aluminium profile with 25micron maximum corrosion resistance anodization with matt finish or with textured electrostatic 100% polyester paint. Prismatic polycarbonate diffuser with low luminance and glare control (UGR<19 for low output or UGR<22 for High Output). Aluminium anodised end caps with matt finish or electrostatic 100% polyester paint with textured-finish.  
Fitting accessories ordered separately.

LED CRI>80 / >50.000h, L80/B10 / 3-step MacAdam  
Power supply included.  
IP40 | 230Vac | 50/60Hz



LED	2700K	Light Source	Luminaire
Power		28W	32,9W
Flux		4800lm	2960lm
Efficiency		171lm/W	90lm/W
LOR		-	62%
UGR		-	<19

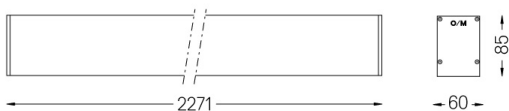


Beam angle  
Prismatic

Application



Weight  
5Kg



Finishes

- .01 White / RAL 9010
- .02 Black / RAL 9005
- .10 Anodised aluminium

Mandatory

54036 Pendant direct fitting accessory  
56051 Clear Base DALI  
ø60x35mm

For the specific supply of "DALI 2" drivers, please contact:  
support@om-light.com

Data according to regulations

2019/2020/EU supplemented by 2021/341 | 2019/2015/EU supplemented by 2021/340/EU Energy Consumption Labelling Ordinance. This product contains light sources of efficiency class D Model Identifier 89603215