



Design: Eduardo Souto de Moura

Recessed luminaire with housing made of aluminium profile with 25micron maximum corrosion resistance anodization with matt finish or with textured electrostatic 100% polyester paint.

Prismatic polycarbonate diffuser with low luminance and glare control (UGR<19 for low output or UGR<22 for High Output).

Aluminium anodised end caps with matt finish or electrostatic 100% polyester paint with textured-finish.

Fitting accessories ordered separately.

LED CRI>80 / >50.000h, L80/B10 / 3-step MacAdam

Power supply included.

IP42 | 230Vac | 50/60Hz



LED	4000K	Light Source	Luminaire
Power		28W	32,9W
Flux		5200lm	3200lm
Efficiency		186lm/W	97lm/W
LOR		-	62%
UGR		-	<19



Beam angle  
Prismatic

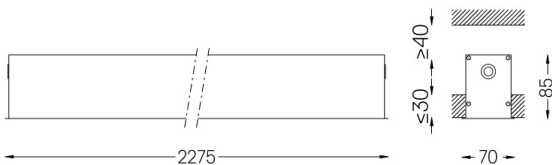
Application



Weight  
5Kg



62x2265



Finishes

- .01 White / RAL 9010
- .02 Black / RAL 9005
- .10 Anodised aluminium

Mandatory

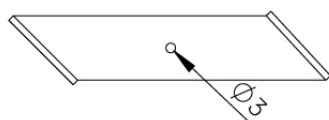
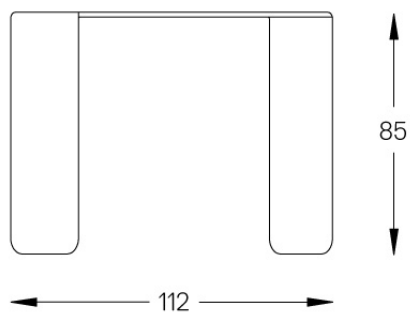
52106 Recessed fitting accessory

For the specific supply of "DALI 2" drivers, please contact:  
support@om-light.com

O/M recommends that any false ceilings intended for recessed products should be installed only after the products to be used have been chosen. The same applies when preparing openings for this type of product. O/M recommends reinforcing false ceilings close to any such openings, in accordance with the characteristics of the product to be recessed. The cutout dimensions are for plasterboard ceilings. For other type of material please contact: support@om-light.com

Data according to regulations

2019/2020/EU supplemented by 2021/341 | 2019/2015/EU supplemented by 2021/340/EU Energy Consumption Labelling Ordinance. This product contains light sources of efficiency class C Model Identifier 89603217



A fitting accessory must be applied at the end of each profile section and every 1,16m