

U60 IP54 Recessed trimless

34W / 2925lm / 3000K / On/Off / Diffuse /
1423mm

61675



Design: Eduardo Souto de Moura

Recessed trimless luminaire with housing made of anodised aluminium profile with matt or textured-paint finish.

Frosted polycarbonate diffuser with user friendly clipping system and double fitting system: flushed or recessed.

Aluminium End caps.

Fitting accessories ordered separately.

LED CRI>80 / >50.000h, L80/B10 / 3-step MacAdam

Power supply included.

IP54 | 230Vac | 50/60Hz



LED	3000K	Light Source	Luminaire
Power	34W		40W
Flux	6125lm		2925lm
Efficiency	180lm/W		73lm/W
LOR	-		48%
UGR	-		<25



Beam angle
Diffuse

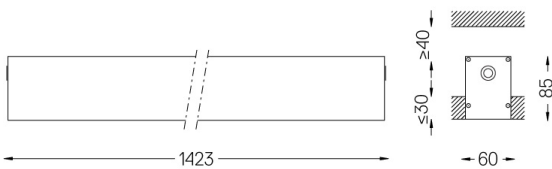
Application



Weight
3,1Kg



62x1425



Finishes

- .01 White / RAL 9010
- .02 Black / RAL 9005
- .10 Anodised aluminium

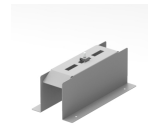
Mandatory

59024 Recessed trimless fitting accessory

O/M recommends that any false ceilings intended for recessed products should be installed only after the products to be used have been chosen. The same applies when preparing openings for this type of product. O/M recommends reinforcing false ceilings close to any such openings, in accordance with the characteristics of the product to be recessed. The cutout dimensions are for plasterboard ceilings. For other type of material please contact: support@om-light.com

Data according to regulations

2019/2020/EU supplemented by 2021/341 | 2019/2015/EU supplemented by 2021/340/EU Energy Consumption Labelling Ordinance. This product contains light sources of efficiency class C Model Identifier 89603211, 89603216



A fitting accessory must be applied at the end of each profile section and every 1,16m

