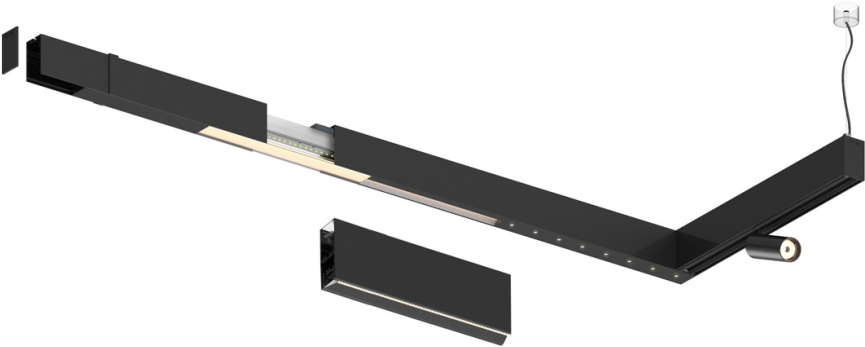



Design: O/M
Indirect module to Sys45 system with Linear lenses
for batwing effect. Protected by a clear
polycarbonate diffuser. ordered separately.

LED CRI>80 / >50.000h, L80/B10
3-step MacAdam / power supply included.
IP20 | 230Vac | 50/60Hz



 3000K	Light Source	Luminaire
Power	13W	15W
Flux	1650lm	1050lm
Efficiency	131lm/W	70lm/W
LOR	-	64%
UGR	-	-



Beam angle
Diffuse

Application

Weight

Finishes

Choose the length and layout of the system exactly as you want it, to
model the right lighting functions for different tasks. For further
information please contact: support@om-light.com

