

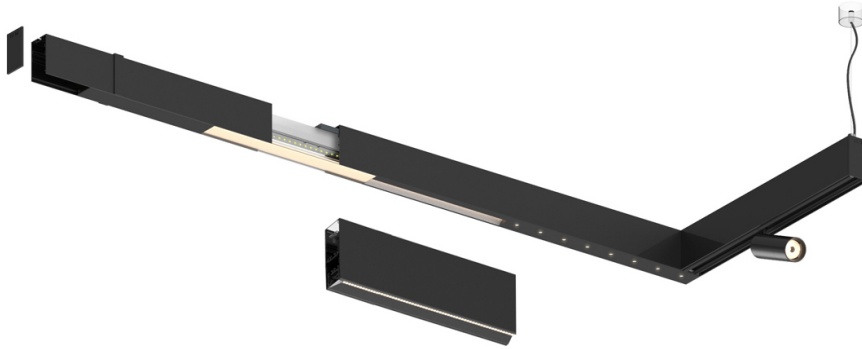
32W / 2050lm / 4000K / DALI / Asymmetric / 1200mm

61254

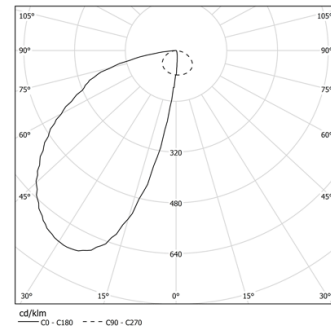
Compatibility with other modules must be confirmed with support@om-light.com

Design: O/M + Bartenbach GmbH
LED light source with excellent colour consistency and long operation lifespan.
Asymmetrical aluminium reflector.

LED CRI>80 / >50.000h, L80/B10
2-step MacAdam / power supply included.
IP20 | 230Vac | 50/60Hz



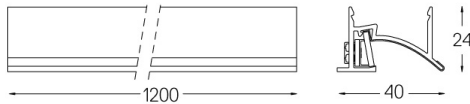
LED	4000K	Light Source	Luminaire
Power		32W	38W
Flux		4480lm	2050lm
Efficiency		140lm/W	54lm/W
LOR		-	46%
UGR		-	-



Beam angle
Asymmetric

Application

Weight



Finishes

- .01 White / RAL 9010
- .02 Black / RAL 9005
- .03 Grey / RAL 9006

Choose the length and layout of the system exactly as you want it, to model the right lighting functions for different tasks. For further information please contact: support@om-light.com
For the specific supply of "DALI 2" drivers, please contact: support@om-light.com