

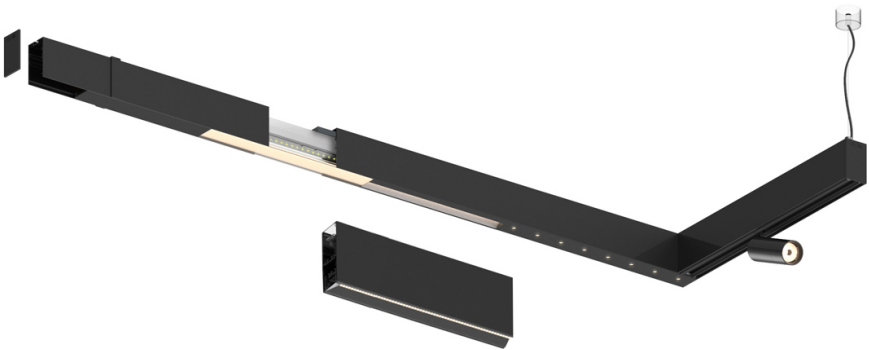
14W / 1440lm / 4000K / DALI / Wide flood  
80° / 1152mm

61225

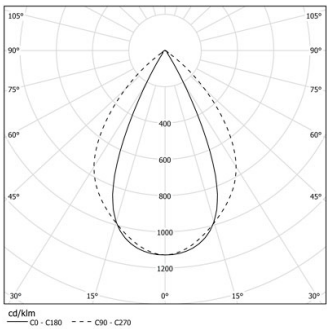
Compatibility with other modules must be confirmed  
with [support@om-light.com](mailto:support@om-light.com)

Design: OM + Bartenbach  
GmbH  
Module with linear extruded lenses (Lightstream)  
combined with a secondary reflector, integrated into  
an extruded aluminium profile.

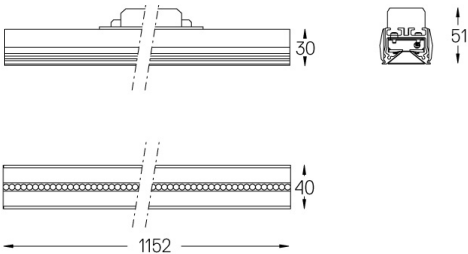
LED CRI>90 / >50.000h, L80/B10 / 2-step MacAdam  
Power supply included.  
IP20 | 230Vac | 50/60Hz



LED	4000K	Light Source	Luminaire
Power		14W	16W
Flux		1800lm	1440lm
Efficiency		136lm/W	92lm/W
LOR		-	0.8
UGR		-	<19



Beam angle  
Wide flood 80°  
Application  
Weight



Finishes  
○ .01 White / RAL 9010  
● .02 Black / RAL 9005

For the specific supply of "DALI 2" drivers, please contact:  
[support@om-light.com](mailto:support@om-light.com)  
Choose the length and layout of the system exactly as you want it, to  
model the right lighting functions for different tasks. For further  
information please contact: [support@om-light.com](mailto:support@om-light.com)