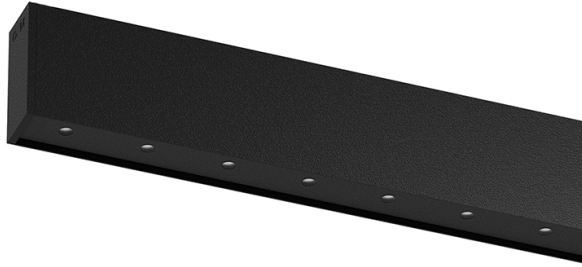


52W / 3920lm / 3000K / On/Off / Flood 52°
/ 1211mm

60673



Design: O/M + Bartenbach GmbH

Surface or pendant luminaire with housing made of aluminium with electrostatic 100% polyester paint with textured finish.

Aluminium anodised end caps with matt finish or electrostatic 100% polyester paint with textured-finish.

Housing and perforated cover plate made of aluminium with textured-paint finish. With the latest Bartenbach GmbH technology, inVision35 is a discreet solution, that can use great light distribution and visual comfort from a nearly invisible source.

Fitting accessories for pendant version ordered separately.

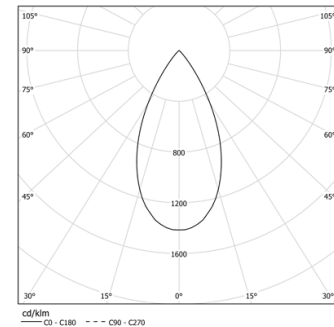
LED CRI>90 / >50.000h, L80/B10 / 2-step MacAdam

Power supply included.

IP20 | 230Vac | 50/60Hz



LED	3000K	Light Source	Luminaire
Power		52W	61,2W
Flux		5160lm	3920lm
Efficiency		99lm/W	64lm/W
LOR		-	76%
UGR		-	<16

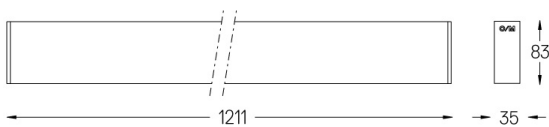


Beam angle
Flood 52°

Application



Weight
2,4Kg



Finishes

○ .01 White / RAL 9010

● .02 Black / RAL 9005

Mandatory

54036 Pendant direct fitting accessory

54034 Clear Base

ø60x35mm