

10W / 810lm / 3000K / DALI / Medium 28° /  
ø45mm

60299



Design: O/M

Recessed adjustable spotlight with aluminium body.

The spotlight can be rotated up to 90° horizontally and 330° vertically.

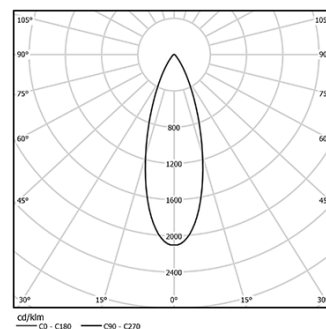
Easy recessing system with spring clips.

Accessories available separately and easily applicable after installation.

LED CRI>90 / >50.000h, L80/B10  
2-step MacAdam / Power supply included.  
IP20 | 230Vac | 50/60Hz



LED	3000K	Light Source	Luminaire
Power		10W	12,5W
Flux		1035lm	810lm
Efficiency		104lm/W	65lm/W
LOR		-	78%
UGR		-	<16



Beam angle  
Medium 28°

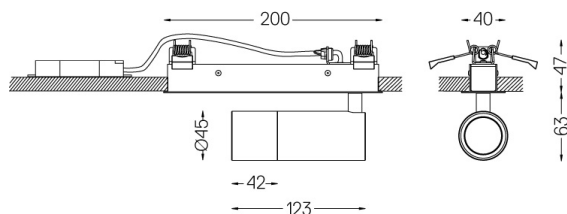
Application



Weight  
0,6Kg



194x26



Finishes

- .01 White / RAL 9010
- .02 Black / RAL 9005

Optional

**59016** Elliptical refractor

Ø39x0,5mm

**59017** Soft diffuser

Ø39x0,5mm

**59018** Louvre

Ø39x3mm

**59019** Snoot 72mm

Ø45x72

For the specific supply of "DALI 2" drivers, please contact:  
support@om-light.com

The cutout dimensions are for plasterboard ceilings. For other type of material please contact: support@om-light.com

Data according to regulations

2019/2020/EU supplemented by 2021/341 |2019/2015/EU  
supplemented by 2021/340/EU Energy Consumption Labelling  
Ordinance. This product contains a light source of efficiency class F  
Model Identifier 2053560257H