

10W / 910lm / 3000K / On/Off / Spot 12° /  
ø45mm

60296

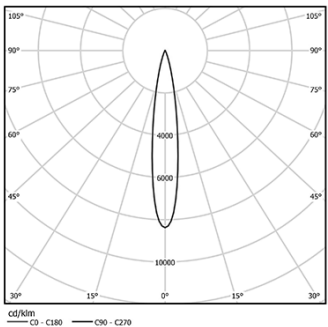


Design: O/M  
Recessed adjustable spotlight with aluminium body.  
The spotlight can be rotated up to 90° horizontally  
and 330° vertically.  
Easy recessing system with spring clips.  
Accessories available separately and easily applicable  
after installation.

LED CRI>90 / >50.000h, L80/B10  
2-step MacAdam / Power supply included.  
IP20 | 230Vac | 50/60Hz



LED	3000K	Light Source	Luminaire
Power		10W	12,5W
Flux		1035lm	910lm
Efficiency		104lm/W	73lm/W
LOR		-	88%
UGR		-	<13



Beam angle  
Spot 12°

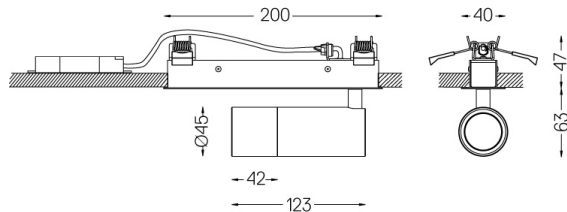
Application



Weight  
0,6Kg



194x26



Finishes

- .01 White / RAL 9010
- .02 Black / RAL 9005

Optional

- 59016** Elliptical refractor  
Ø39x0,5mm
- 59017** Soft diffuser  
Ø39x0,5mm
- 59018** Louvre  
Ø39x3mm
- 59019** Snoot 72mm  
Ø45x72

The cutout dimensions are for plasterboard ceilings. For other type of material please contact: support@om-light.com

Data according to regulations  
2019/2020/EU supplemented by 2021/341 |2019/2015/EU  
supplemented by 2021/340/EU Energy Consumption Labelling  
Ordinance. This product contains a light source of efficiency class F  
Model Identifier 2053560257H