

10W / 720lm / 2700K / On/Off / Medium 28°
/ ø45mm

60293



Design: O/M

Recessed adjustable spotlight with aluminium body. The spotlight can be rotated up to 90° horizontally and 330° vertically.

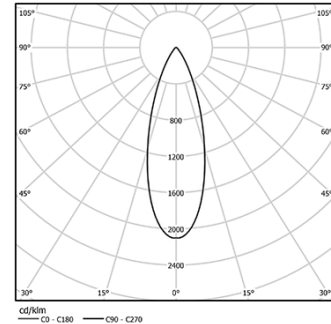
Easy recessing system with spring clips.

Accessories available separately and easily applicable after installation.

LED CRI>90 / >50.000h, L80/B10
2-step MacAdam / Power supply included.
IP20 | 230Vac | 50/60Hz



LED	2700K	Light Source	Luminaire
Power	10W		12,5W
Flux	955lm		720lm
Efficiency	96lm/W		58lm/W
LOR	-		75%
UGR	-		<16



Beam angle
Medium 28°

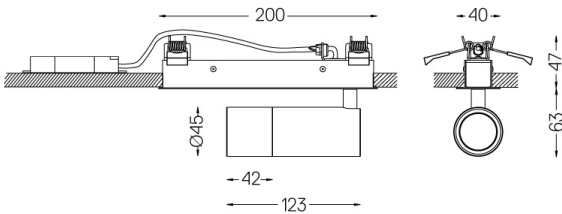
Application



Weight
0,6Kg



194x26



Finishes

- .01 White / RAL 9010
- .02 Black / RAL 9005

Optional

- 59016** Elliptical refractor
Ø39x0,5mm
- 59017** Soft diffuser
Ø39x0,5mm
- 59018** Louvre
Ø39x3mm
- 59019** Snoot 72mm
Ø45x72

The cutout dimensions are for plasterboard ceilings. For other type of material please contact: support@om-light.com

Data according to regulations

2019/2020/EU supplemented by 2021/341 | 2019/2015/EU supplemented by 2021/340/EU Energy Consumption Labelling Ordinance. This product contains a light source of efficiency class F Model Identifier 2053560245H