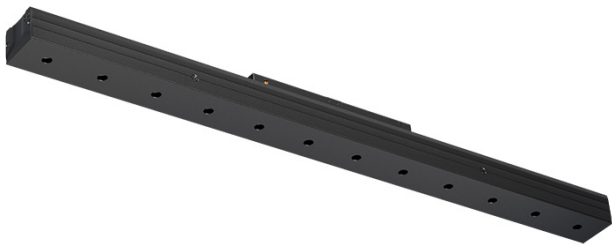


14W / 940lm / 3000K / DALI / Medium 30° /  
601mm

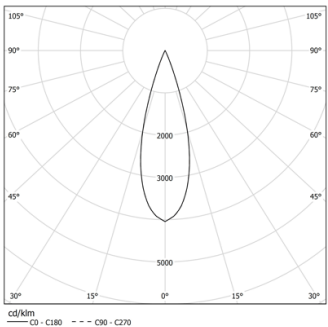
73052

Design: O/M + Bartenbach GmbH  
Module with double focus lens and housing and  
perforated cover plate made of aluminium with  
textured-paint finish.  
Available in white (.01) and black (.02)

LED CRI>90 / >50.000h, L80/B10 / 2-step MacAdam  
Power supply included.  
IP20 | 48Vdc



LED	3000K	Light Source	Luminaire
Power		14W	17,1W
Flux		1290lm	940lm
Efficiency		92lm/W	55lm/W
LOR		-	73%
UGR		-	<10

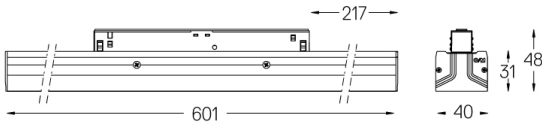


Beam angle  
Medium 30°

Application



Weight  
-



Finishes

- .01 White / RAL 9010
- .02 Black / RAL 9005

Optional

70045 Modules removal tool  
20x75mm

Data according to regulations

2019/2020/EU supplemented by 2021/341 | 2019/2015/EU  
supplemented by 2021/340/EU Energy Consumption Labelling  
Ordinance. This product contains a light source of efficiency class E  
Model Identifier 4053560343L