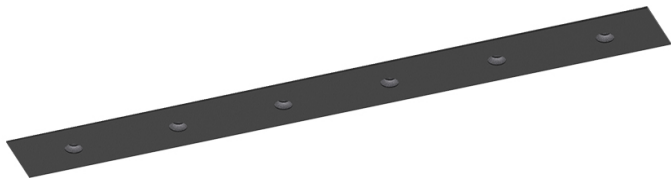


6,3W / 310lm / 4000K / On/Off / Spot 17° / 300mm

65222



Design: O/M + Bartenbach GmbH
Luminaire with housing of aluminium profile with electrostatic 100% polyester paint with textured-finish.
Focal-lens with complex surface and individual complex surface rips to provide a focal point through an aperture for glare free area illumination.
Special springs available on request.

LED CRI>90 / >50.000h, L80/B10 / 2-step MacAdam
Power supply included.
IP20 | 230Vac | 50/60Hz



LED	4000K	Light Source	Luminaire
Power		6,3W	7,9W
Flux		710lm	310lm
Efficiency		-	-
LOR		-	-
UGR		-	-



Beam angle
Spot 17°

Application



Weight
0,3Kg



Finishes

- .01 White / RAL 9010
- .02 Black / RAL 9005

The cutout dimensions are for plasterboard ceilings. For other type of material please contact: support@om-light.com