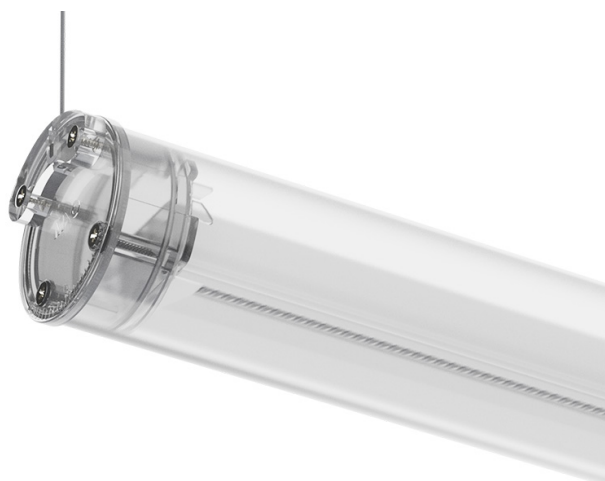


## Tubo Pro Pendant

42W / 3670lm / 3000K / DALI / Wide flood  
76° / 1544mm

64920



Design: Eduardo Souto de Moura

Pendant luminaire with tubular semi frosted PMMA body with 70mm diameter.

Clear polycarbonate end caps with marked installation angles.

Linear lenses (Lightstream) combined with a secondary reflector, integrated into an extruded aluminium profile.

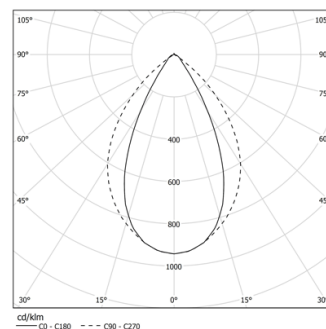
Equipped with 2m cable (5x0.75 mm²).

Fitting accessories ordered separately.

LED CRI>90 / >50.000h, L80/B10 / 2-step MacAdam  
Power supply included.  
IP44 | 230Vac | 50/60Hz



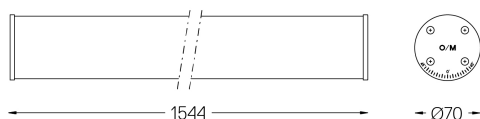
LED	3000K	Light Source	Luminaire
Power		42W	48,8W
Flux		5400lm	3670lm
Efficiency		130lm/W	75lm/W
LOR		-	68%
UGR		-	<19



Beam angle  
Wide flood 76°

Application

Weight



Finishes

○ .01 White / RAL 9010

Mandatory

59146 Pendant fitting accessory

Data according to regulations

2019/2020/EU supplemented by 2021/341 [2019/2015/EU supplemented by 2021/340/EU Energy Consumption Labelling Ordinance. This product contains light sources of efficiency class E  
Model Identifier 2053560160