

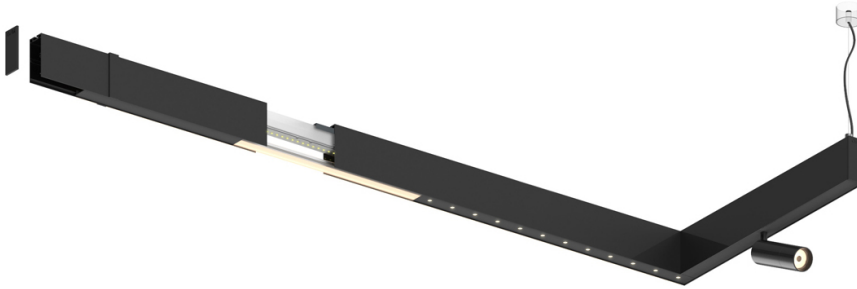
Sys35 inVision module


21W / 1320lm / 2700K / DALI / Medium 30° /
900mm

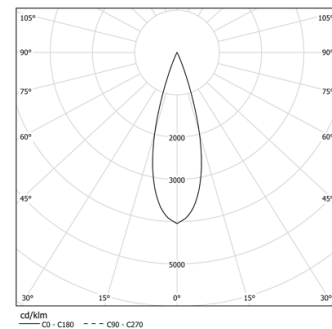
64000

Design: O/M + Bartenbach GmbH
inVision module with housing and perforated cover
plate made of aluminium with textured-paint finish.

LED CRI>90 / >50.000h, L80/B10 / 2-step MacAdam
Power supply included.
IP20 | 230Vac | 50/60Hz



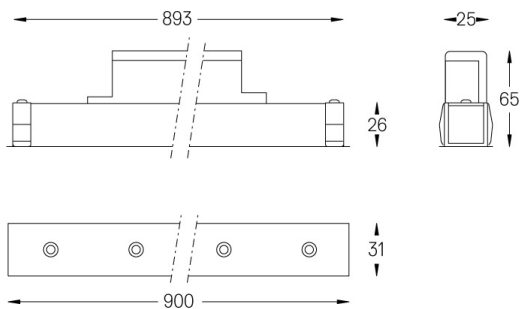
 LED	2700K	Light Source	Luminaire
Power	21W		24W
Flux	1800lm		1320lm
Efficiency	86lm/W		55lm/W
LOR	-		0.7333333333333333
UGR	-		<10



Beam angle
Medium 30°

Application

Weight
0,6Kg



Finishes

- .01 White / RAL 9010
● .02 Black / RAL 9005

For the specific supply of "DALI 2" drivers, please contact:
support@om-light.com

Choose the length and layout of the system exactly as you want it, to model the right lighting functions for different tasks. For further information please contact: support@om-light.com