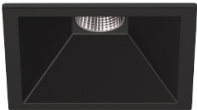


5,6W / 350lm / 3000K / DALI / Medium 40° / 60x60mm

63490

Design: O/M + Bartenbach GmbH
Ceiling-recessed luminaire with aluminium die-cast body and heat sink with electrostatic 100% polyester paint finish.
Lightcore optics for defined and perfectly controlled beam of light.
Fitting accessories for different applications are available.

LED CRI>90 / >50.000h, L80/B10
2-step MacAdam / Power supply included.
IP20 | 230Vac | 50/60Hz



LED	3000K	Light Source	Luminaire
Power		5,6W	7W
Flux		460lm	350lm
Efficiency		82lm/W	50lm/W
LOR		-	76%
UGR		-	<10



Beam angle
Medium 40°

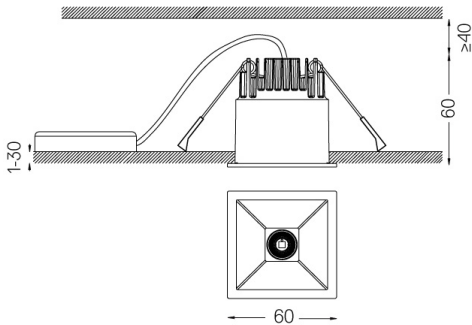
Application



Weight
0,30Kg



53x53



Finishes

- .01 White / RAL 9010
- .02 Black / RAL 9005

For the specific supply of "DALI 2" drivers, please contact:
support@om-light.com
The cutout dimensions are for plasterboard ceilings. For other type of material please contact: support@om-light.com

Data according to regulations
2019/2020/EU supplemented by 2021/341 | 2019/2015/EU supplemented by 2021/340/EU Energy Consumption Labelling Ordinance. This product contains a light source of efficiency class G
Model Identifier 4053560290H