

Design: O/M + Bartenbach GmbH

Luminaire with housing of aluminium profile with electrostatic 100% polyester paint with textured-finish.

Focal-lens with complex surface and individual complex surface rips to provide a focal point through an aperture for glare free area illumination.

Special springs available on request.

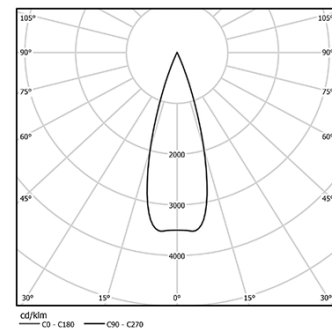
LED CRI>90 / >50.000h, L80/B10 / 2-step MacAdam

Power supply included.

IP20 | 230Vac | 50/60Hz



LED	3000K	Light Source	Luminaire
Power		6,5W	8,1W
Flux		645lm	470lm
Efficiency		99lm/W	90lm/W
LOR		-	73%
UGR		-	<10



Beam angle
Medium 31°

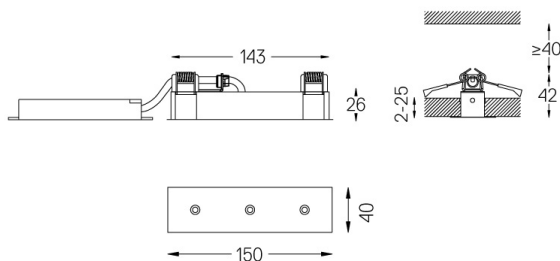
Application



Weight
0,22Kg



26x144



Finishes

- .01 White / RAL 9010
- .02 Black / RAL 9005

For the specific supply of "DALI 2" drivers, please contact:
support@om-light.com

The cutout dimensions are for plasterboard ceilings. For other type of material please contact: support@om-light.com

Data according to regulations

2019/2020/EU supplemented by 2021/341 | 2019/2015/EU supplemented by 2021/340/EU Energy Consumption Labelling Ordinance. This product contains a light source of efficiency class E Model Identifier 4053560263H