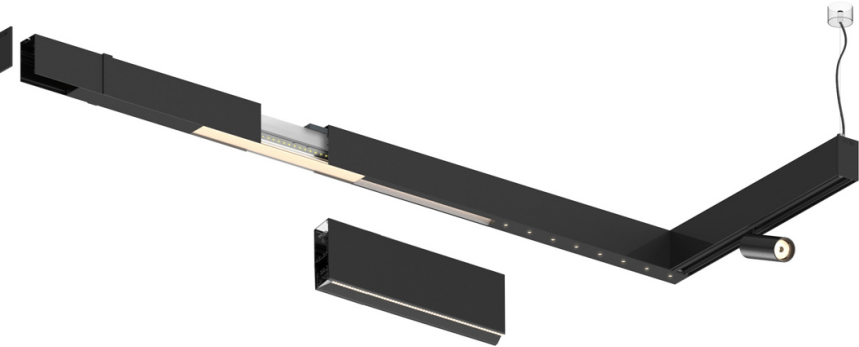



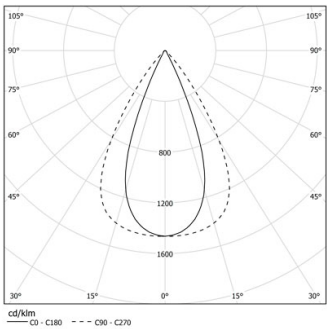
Compatibility with other modules must be confirmed with support@om-light.com

Design: OM + Bartenbach GmbH
Module with linear extruded lenses (Lightstream) combined with a secondary reflector, integrated into an extruded aluminium profile.

LED CRI>90 / >50.000h, L80/B10 / 2-step MacAdam
Power supply included.
IP20 | 230Vac | 50/60Hz



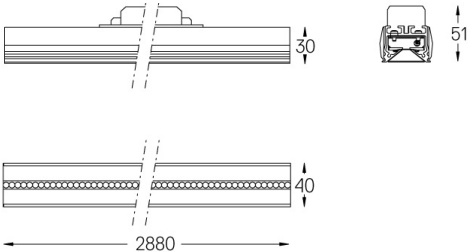
 3000K	Light Source	Luminaire
Power	33W	39W
Flux	4200lm	3400lm
Efficiency	127lm/W	87lm/W
LOR	-	0.8100000000000001
UGR	-	<13



Beam angle
Flood 65°

Application

Weight



- Finishes
-  .01 White / RAL 9010
 -  .02 Black / RAL 9005

For the specific supply of "DALI 2" drivers, please contact: support@om-light.com

Choose the length and layout of the system exactly as you want it, to model the right lighting functions for different tasks. For further information please contact: support@om-light.com